

catalogue
2024



Worlds of *Handles*...

About us

At Pains, we understand that the finer details make all the difference. Our commitment to precision and quality is reflected in every piece we create. With a focus on innovation and design, we offer a diverse range of architectural hardware that seamlessly integrates into both contemporary and classic environments.

At Pains artistry meets functionality in the realm of architectural hardware. As a premier manufacturer, we take pride in crafting exquisite cabinet handles, main door handles, and drawer knobs that elevate the aesthetic appeal and functionality of spaces.

What sets us apart at Pains is not just our products but our passion for excellence. Our team of skilled artisans and craftsmen work tirelessly to create hardware that exceeds expectations. We believe in providing not just products but solutions – ensuring that every piece of hardware we manufacture contributes to the overall design and functionality of your space.

Experience the intersection of craftsmanship and innovation with Pains. We invite you to explore our collection and discover how our architectural hardware can transform your living spaces into true works of art.

Vision

To be a reliable leader in architectural hardware, setting the standard for innovation, design excellence, and unparalleled quality. We aspire to be the go-to choice for architects, designers, and homeowners seeking hardware solutions that seamlessly marry aesthetics with functionality.

Mission:

We strive to excel in designing and manufacturing architectural hardware that transcends the ordinary, enriching the lives of those who interact with our products.

We are dedicated to providing a diverse range of handles and knobs that not only enhance the visual appeal of spaces but also contribute to a superior user experience.

We aim to foster creativity, inspire design excellence, and build lasting relationships with our customers, partners, and employees.

How and Where We Excel

Supreme Prowess

At Pains, we prioritise excellence above all else. Our state-of-the-art, in-house manufacturing facility enables us to deliver truly exceptional masterpieces. Ensuring the highest quality standards, we meticulously inspect every facet of our products at each stage of manufacturing.

Timeless Elegance

Poins products not only boast arresting aesthetics but are also built to withstand the test of time. The meticulous outer coating, comfortable grip, and thoughtful inner workings guarantee years of reliable service.

Exceptional Service

In the realm of interpersonal connections, Pains values the art of cultivating and maintaining relationships through outstanding service. Our swift shipping and unparalleled service have set a new benchmark for communication with both dealers and customers.

Secure Packaging

Every Pains product is meticulously packaged to ensure it reaches the consumer in impeccable condition, embodying our commitment to quality from start to finish.



Contents

01

Zinc Cabinet Handle

31

Aluminium Cabinet Handle

41

Wardrobe Handle

51

SS 304 Cabinet Handle

54

Window Handle

55

Conceal Handle

63

Drawer Knob

73

Drawer Kadi

77

SS 304 Glass Door Handle

87

Cloth Hook



Design & Patent Registered



CABINET

Handle

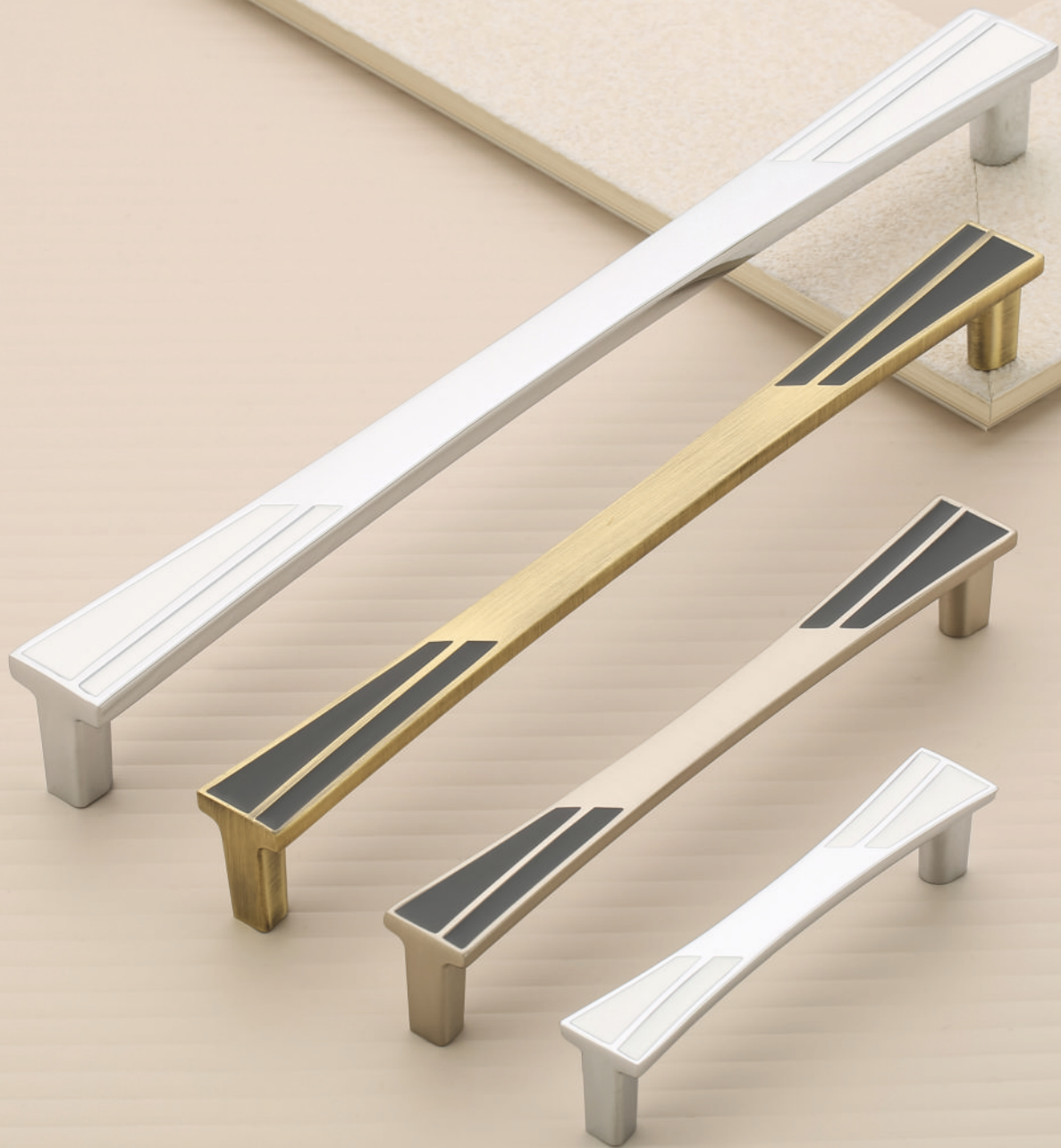
Material
Zinc Alloy

Finish
CP/TT

Size in mm
96, 128, 160, 224

Packing
96/30, 128/20, 160/15, 224/15

802



Design & Patent Registered



CABINET

Handle

Material
Zinc Alloy

Finish
CP/White, SS/Black, AB/Black

Size in mm
96, 160, 224, 288

Packing
96/30, 160/20, 224/15, 288/15

810



Design & Patent Registered



CABINET

Handle

Material
Zinc Alloy

Finish
Black/TT, SS, CP

Size in mm
96, 160, 224, 288, 416

Packing
96/40, 160/20, 224/15, 288/15, 416/15

814



Design & Patent Registered



CABINET

Handle

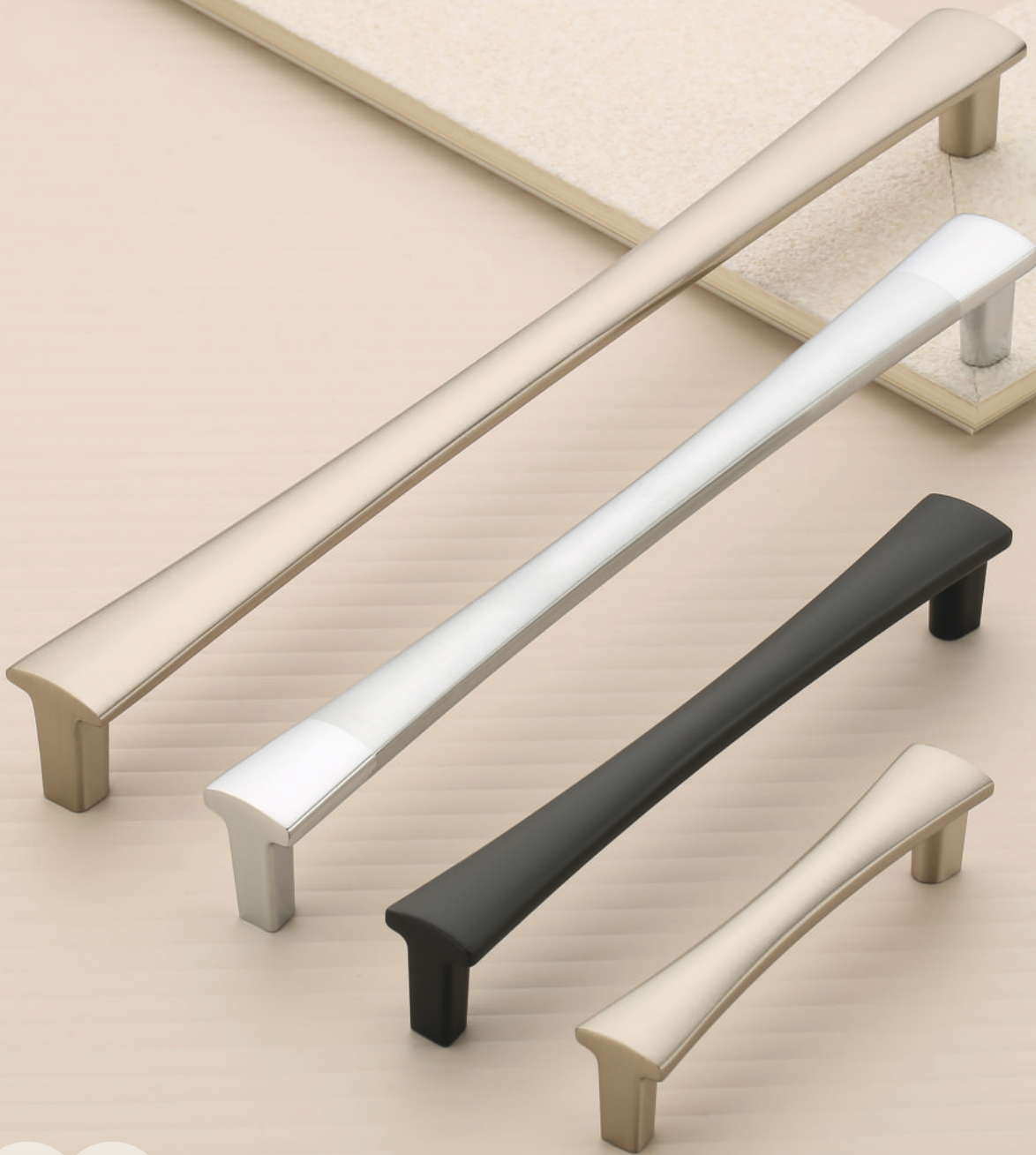
Material
Zinc Alloy

Finish
SS, CP/TT

Size in mm
96, 160, 224, 288

Packing
96/30, 160/20, 224/15, 288/15

816



Design & Patent Registered



CABINET

Handle

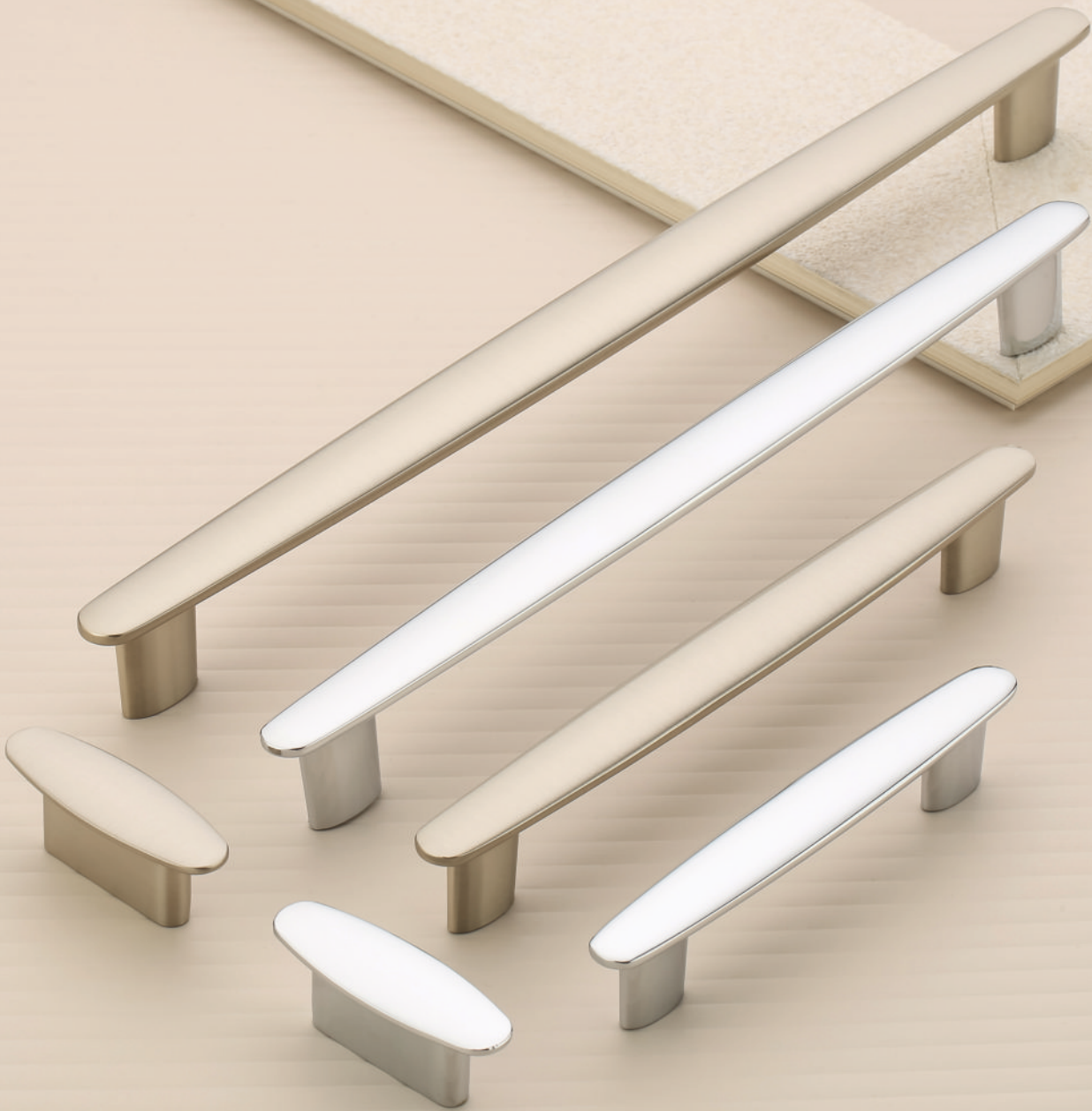
Material
Zinc Alloy

Finish
SS, Z.Black, CP/TT

Size in mm
96, 128, 160, 224, 288, 416

Packing
96/30, 128/25, 160/20, 224/15, 288/15, 416/10

817



Design & Patent Registered



CABINET

Handle

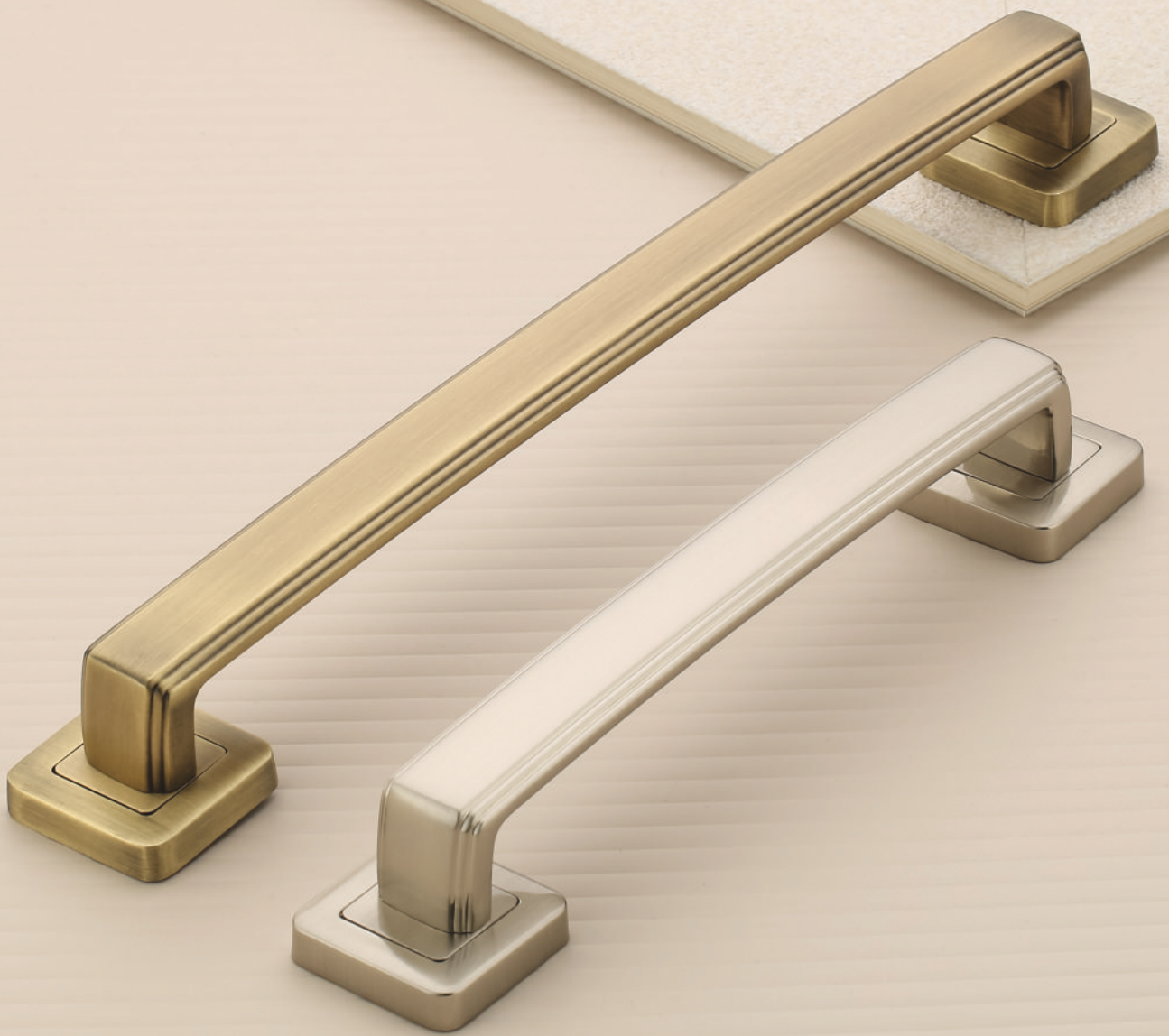
Material
Zinc Alloy

Finish
CP, SS

Size in mm
32, 96, 160, 224, 288, 416

823

Packing
32/50, 96/30, 160/20, 224/15, 288/15, 416/10



Design & Patent Registered



Material
Zinc Alloy

Finish
AB, SS

Size in mm
200, 300, 400

Packing
200/06, 300/06, 400/03

827

MAIN DOOR
Handle



Design & Patent Registered



CABINET

Handle

Material
Zinc Alloy

Finish
CP, SS, AB

Size in mm
96, 160, 224, 288, 416

Packing
96/30, 160/20, 224/15, 288/15, 416/10

831



Design & Patent Registered



CABINET

Handle

Material
Zinc Alloy

Finish
SS Matt, CP, Black Matt

Size in mm
96, 160, 224, 288, 356

Packing
96/30, 160/20, 224/15, 288/15, 356/15

837



Design & Patent Registered



CABINET

Handle

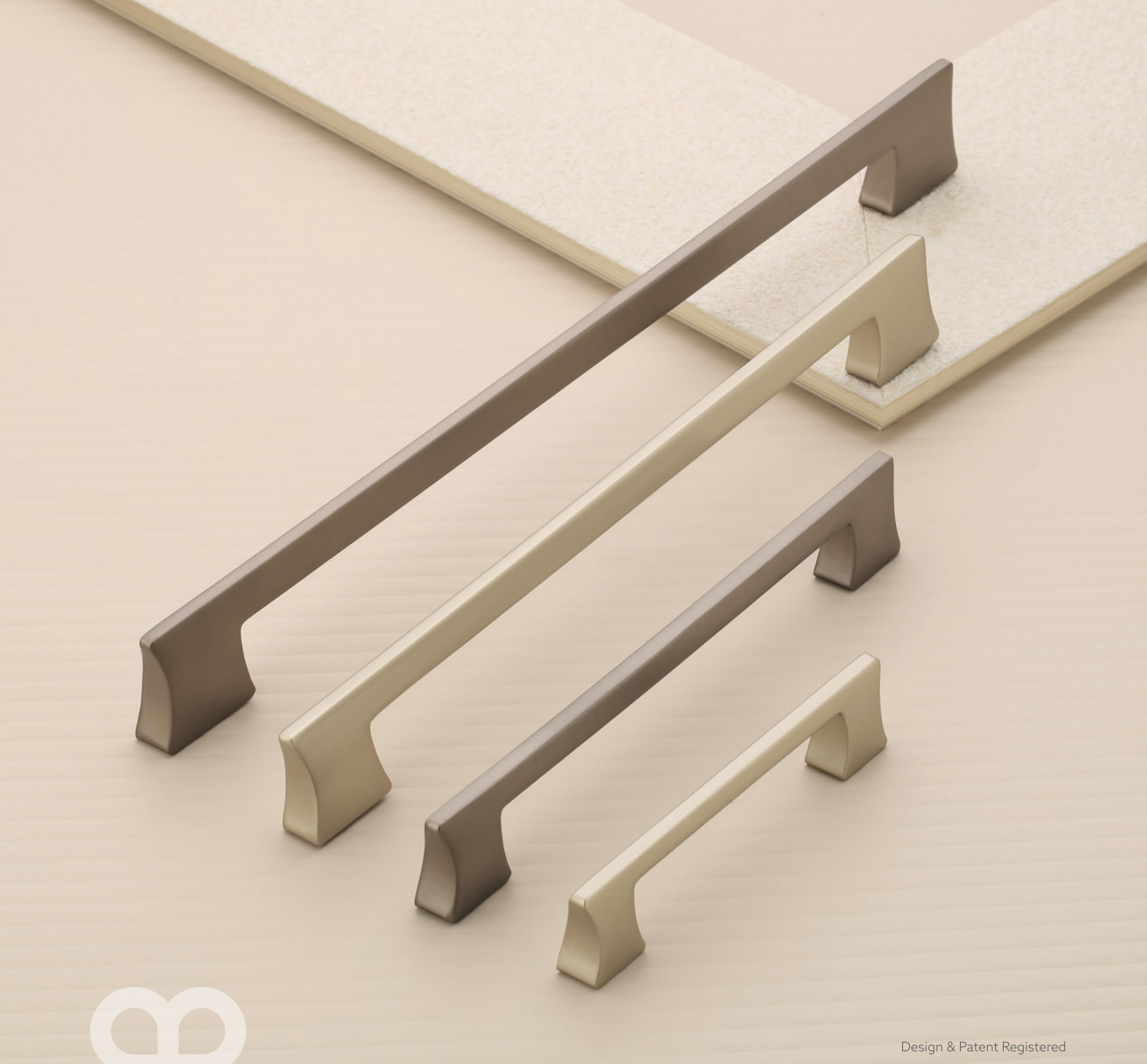
Material
Zinc Alloy

Finish
CP/White, CP/Black

Size in mm
96, 160, 224, 288

Packing
96/30, 160/20, 224/15, 288/15

838



Design & Patent Registered



CABINET

Handle

Material
Zinc Alloy

Finish
SS Matt, Black Matt

Size in mm
96, 160, 224, 288, 416

Packing
96/30, 160/20, 224/15, 288/15, 416/10

839



Design & Patent Registered



CABINET

Handle

Material
Zinc Alloy

Finish
Satin, AB, Cola

Size in mm
96, 160, 224, 288

Packing
96/40, 160/25, 224/15, 288/15

840



Design & Patent Registered



CABINET

Handle

Material
Zinc Alloy

Finish
Satin, Cola Matt, Black Matt

Size in mm
96, 160, 224, 288

Packing
96/30, 160/20, 224/15, 288/15

841



Design & Patent Registered



CABINET

Handle

Material
Zinc Alloy

Finish
Satin, Black Matt, CP

Size in mm
96, 160, 224, 320

Packing
96/40, 160/25, 224/15, 320/15

846



Design & Patent Registered



CABINET

Handle

Material
Zinc Alloy

Finish
Satin, Black Matt, Cola

Size in mm
96, 160, 224, 320

Packing
96/30, 160/20, 224/15, 320/15

849



Design & Patent Registered



CABINET

Handle

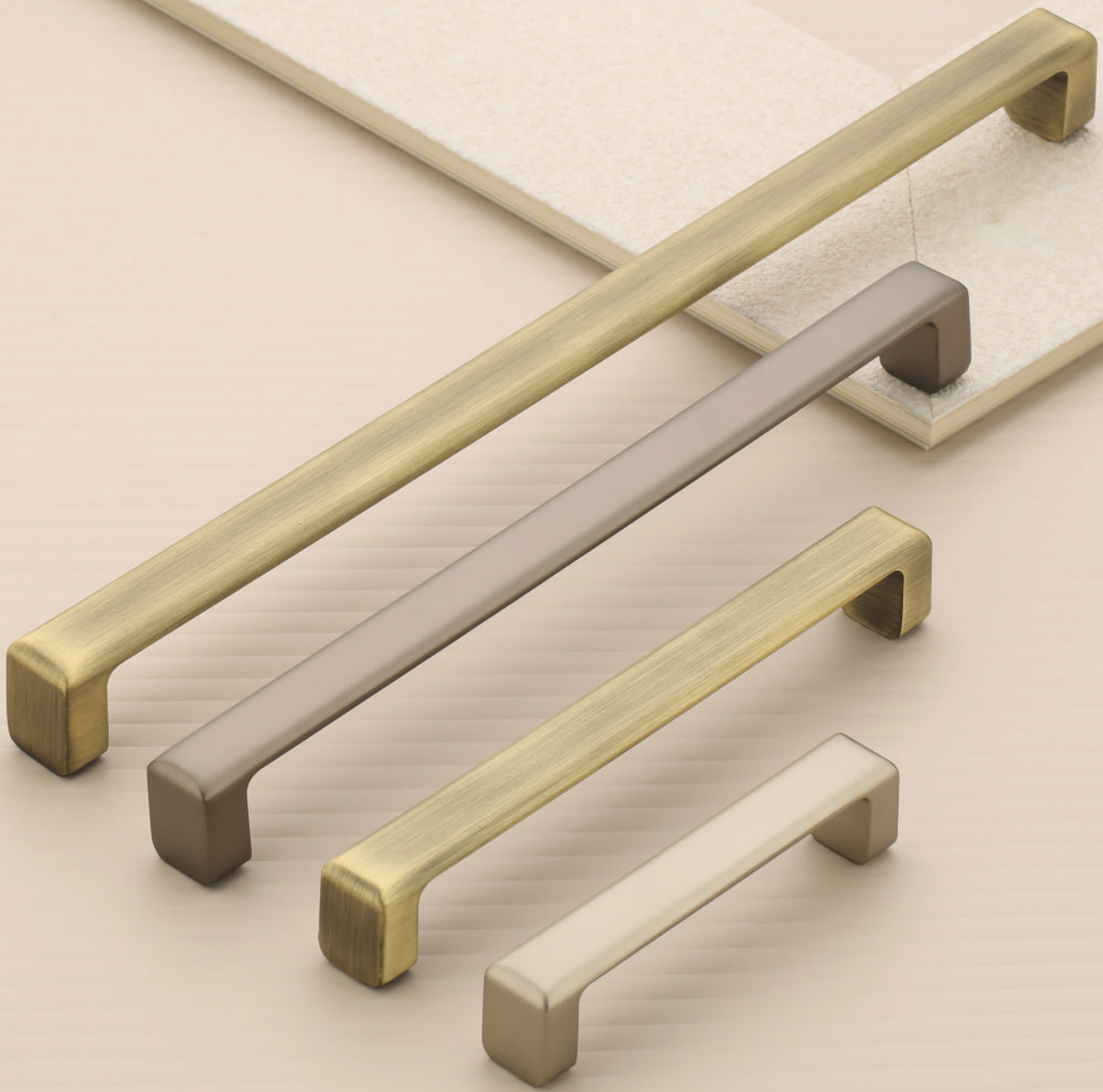
Material
Zinc Alloy

Finish
SS Matt, Black Matt, Cola Matt

Size in mm
96, 160, 224, 320

Packing
96/30, 160/20, 224/15, 320/15

850



Design & Patent Registered



CABINET

Handle

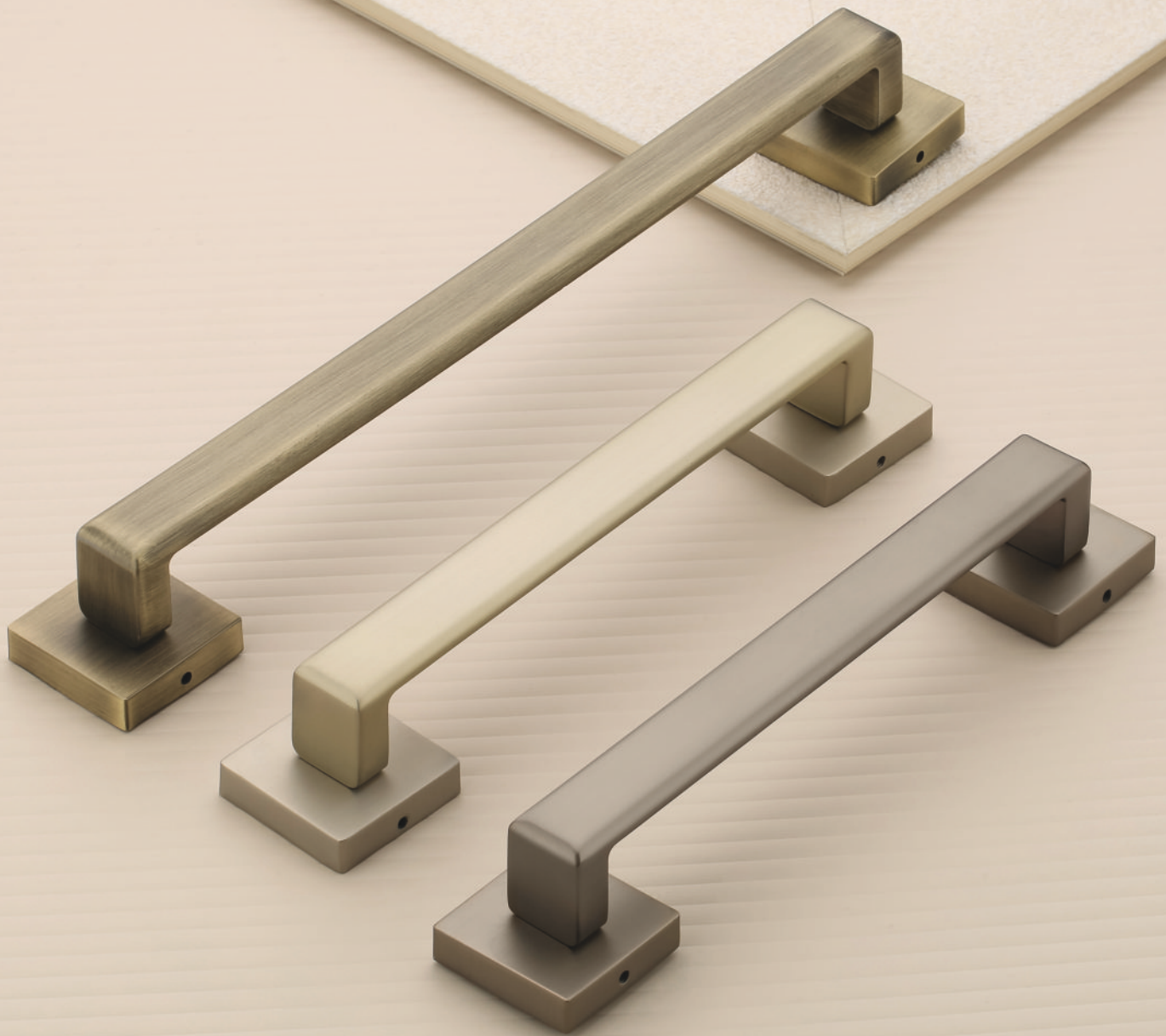
Material
Zinc Alloy

Finish
SS Matt, AB, Black Matt

Size in mm
96, 160, 224, 320

Packing
96/30, 160/20, 224/15, 320/15

851



Design & Patent Registered



MAIN DOOR

Handle

Material
Zinc Alloy

Finish
SS Matt, Black Matt, AB

Size in mm
200, 300

Packing
200/06, 300/06

852



Design & Patent Registered



CABINET

Handle

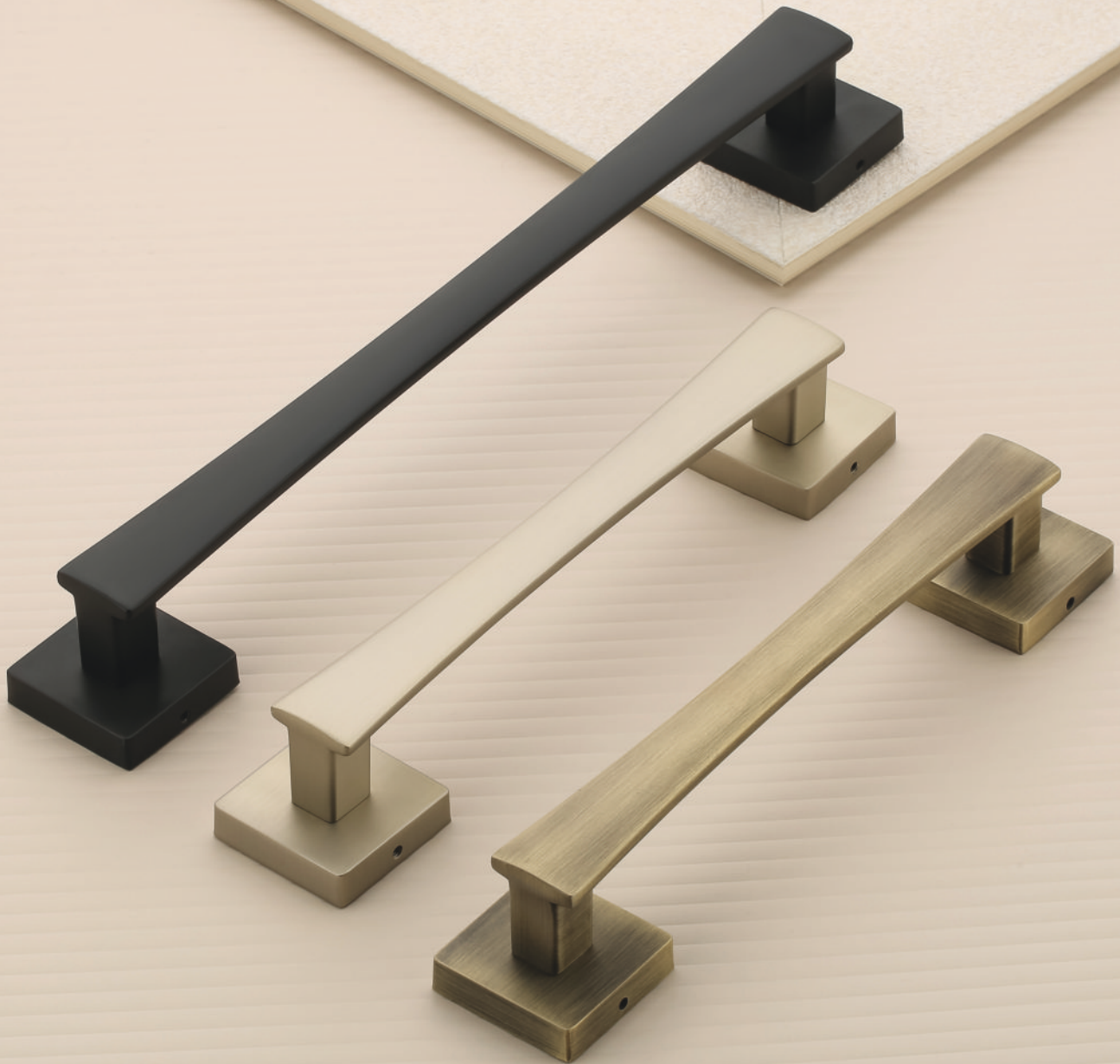
Material
Zinc Alloy

Finish
Black Matt, Satin, Cola Matt, AB

Size in mm
96, 160, 224, 320

Packing
96/30, 160/20, 224/15, 320/15

854



Design & Patent Registered



MAIN DOOR

Handle

Material
Zinc Alloy

Finish
Z.Black, SS Matt, AB

Size in mm
200, 300

Packing
200/06, 300/06

855



Design & Patent Registered



CABINET

Handle

Material
Zinc Alloy

Finish
Cola/Black, Satin/Wenge
Gold/Figure Wood, AB/Black

Size in mm
96, 160, 224, 320

Packing
96/20, 160/15, 224/12, 320/12

856



Design & Patent Registered



CABINET

Handle

Material
Zinc Alloy

Finish
PVD Gold, Satin Matt
PVD R.Gold, Z.Black

Size in mm
96, 160, 224, 320

Packing
96/30, 160/20, 224/15, 320/15

857



Design & Patent Registered



CABINET

Handle

Material
Zinc Alloy

Finish
PVD R.Gold, Satin Matt, PVD Gold, AB

Size in mm
32, 96, 160, 224, 320, 416

Packing
32/40, 96/30, 160/20, 224/15, 320/15
416/10

858



Design & Patent Registered



CABINET

Handle

Material
Zinc Alloy

Finish
Satin Matt, AB, Z.Black, Cola

Size in mm
96, 160, 224, 320

Packing
96/30, 160/20, 224/15, 320/15

859



Design & Patent Registered



CABINET

Handle

Material
Zinc Alloy

Finish
CP/Satin, AB/Black, Cola/Gray
Gold/B.Wood

Size in mm
18, 96, 160, 224, 320

Packing
18/40, 96/25, 160/15, 224/12, 320/12

860



Design & Patent Registered



CABINET

Handle

Material
Zinc Alloy

Finish
Cola, Satin Matt, AB, Z.Black

Size in mm
96, 160, 224, 320

Packing
96/30, 160/20, 224/15, 320/15

861



Design & Patent Registered



CABINET

Handle

Material
Zinc Alloy

Finish
PVD RG/Gray, PVD Gold/Z.Black
C.Black/Z.Black, PVD Gold/AB

Size in mm
32, 96, 160, 224, 288

862 Packing
32/30, 96/20, 160/15, 224/12, 288/12



Design & Patent Registered



Material
Zinc Alloy

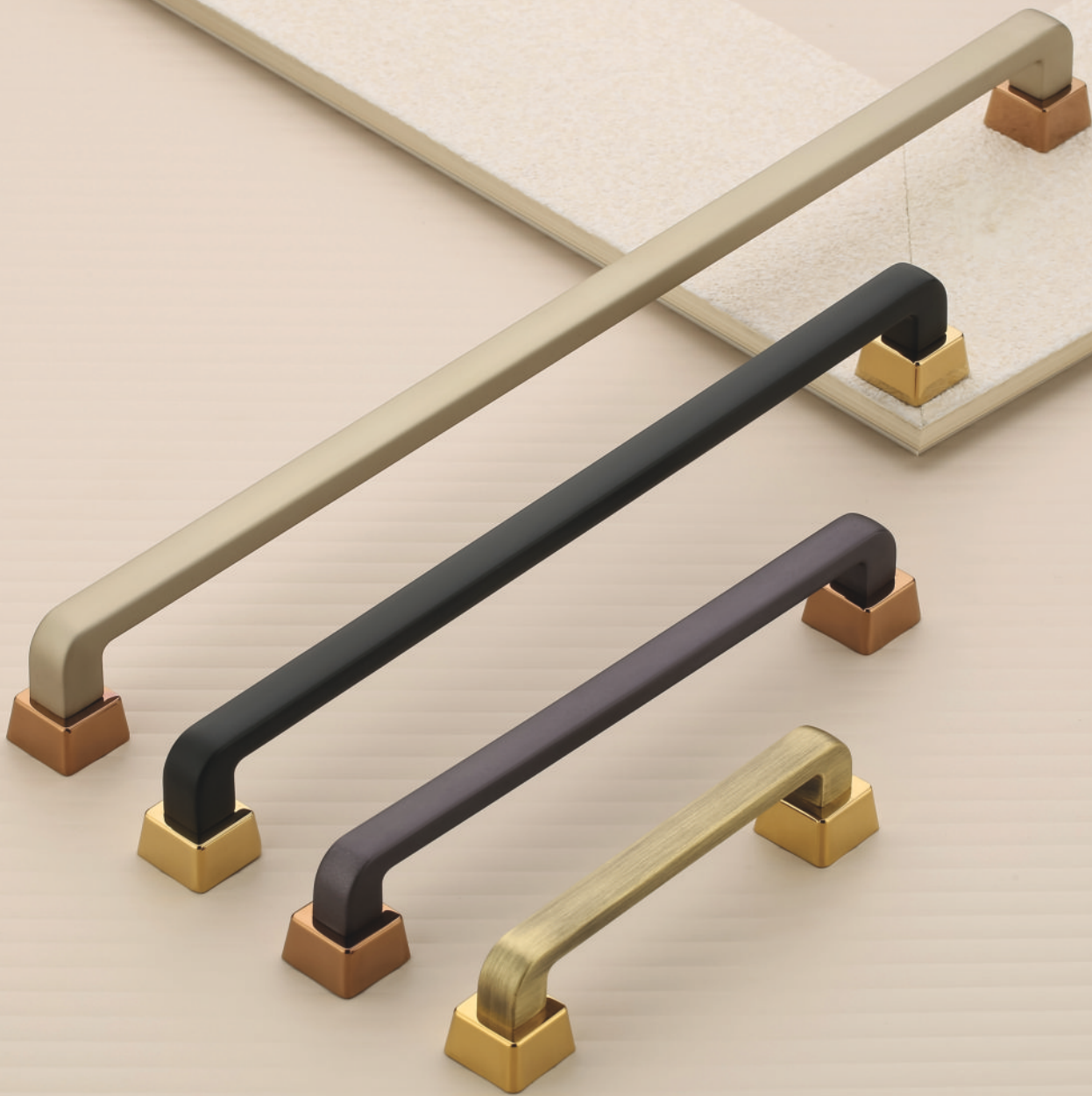
Finish
Satin, PVD Rose Gold, Z.Black
PVD Gold

Size in mm
96, 160, 224, 320

Packing
96/30, 160/20, 224/15, 320/15

863

CABINET
Handle



Design & Patent Registered



CABINET

Handle

Material
Zinc Alloy

Finish
PVD Gold/AB, PVD RG/Gray
PVD Gold/Z.Black, PVD RG/Satin

Size in mm
96, 160, 224, 320

Packing
96/25, 160/15, 224/12, 320/12

864





CABINET

Handle

Material
Aluminium

Finish
CP, Rose Gold, Z.Black, SS Brush

Size in mm
96, 160, 224, 288, 448, 576

Packing
96/30, 160/20, 224/15, 288/15
448/15, 576/15

901



CABINET

Handle

Material
Aluminium

Finish
Z.Black, CP, SS Brush, Rose Gold

Size in mm
96, 160, 224, 288, 448, 576

Packing
96/25, 160/15, 224/15, 288/15
448/15, 576/15

905



CABINET

Handle



Material
Aluminium

Finish
SS Brush, Gold, Black, Rose Gold

Size in mm
32, 96, 160, 224, 288, 448, 576

Packing
32/40, 96/20, 160/15, 224/15
288/15, 448/15, 576/15

906



CABINET

Handle



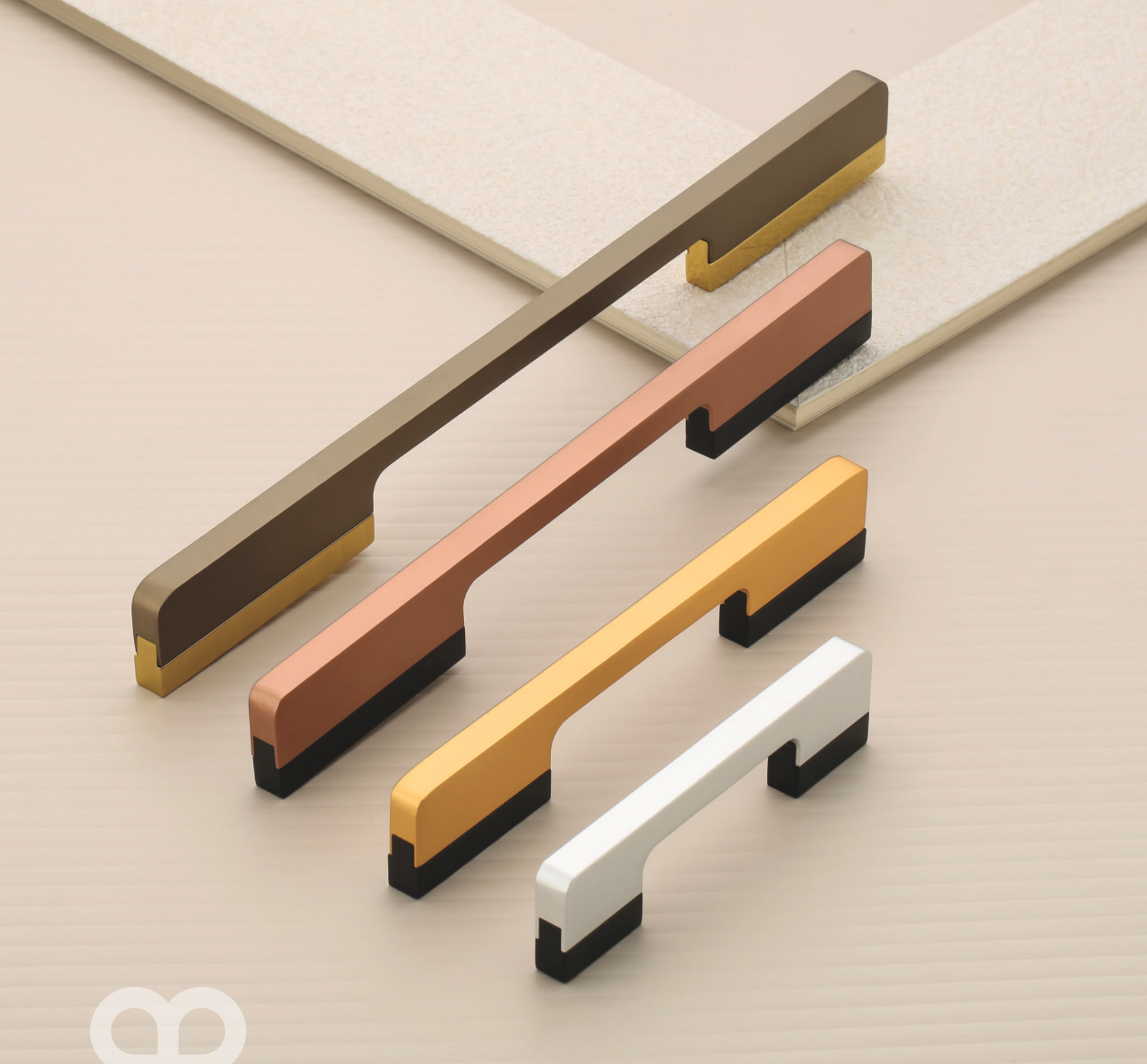
Material
Aluminium

Finish
Black, PVD Rose Gold, SS Brush
PVD Gold

Size in mm
96, 160, 224, 288, 448, 576

Packing
96/30, 160/20, 224/15, 288/15
448/15, 576/15

907



CABINET

Handle

Material
Aluminium

Finish
Silk Silver/Black, Silk Gold/Black
Silk R. Gold/Black, Silk Metallic/Gold

Size in mm
96, 160, 224, 288, 448, 576

Packing
96/30, 160/20, 224/15, 288/15, 448/15
576/15

909



CABINET

Handle

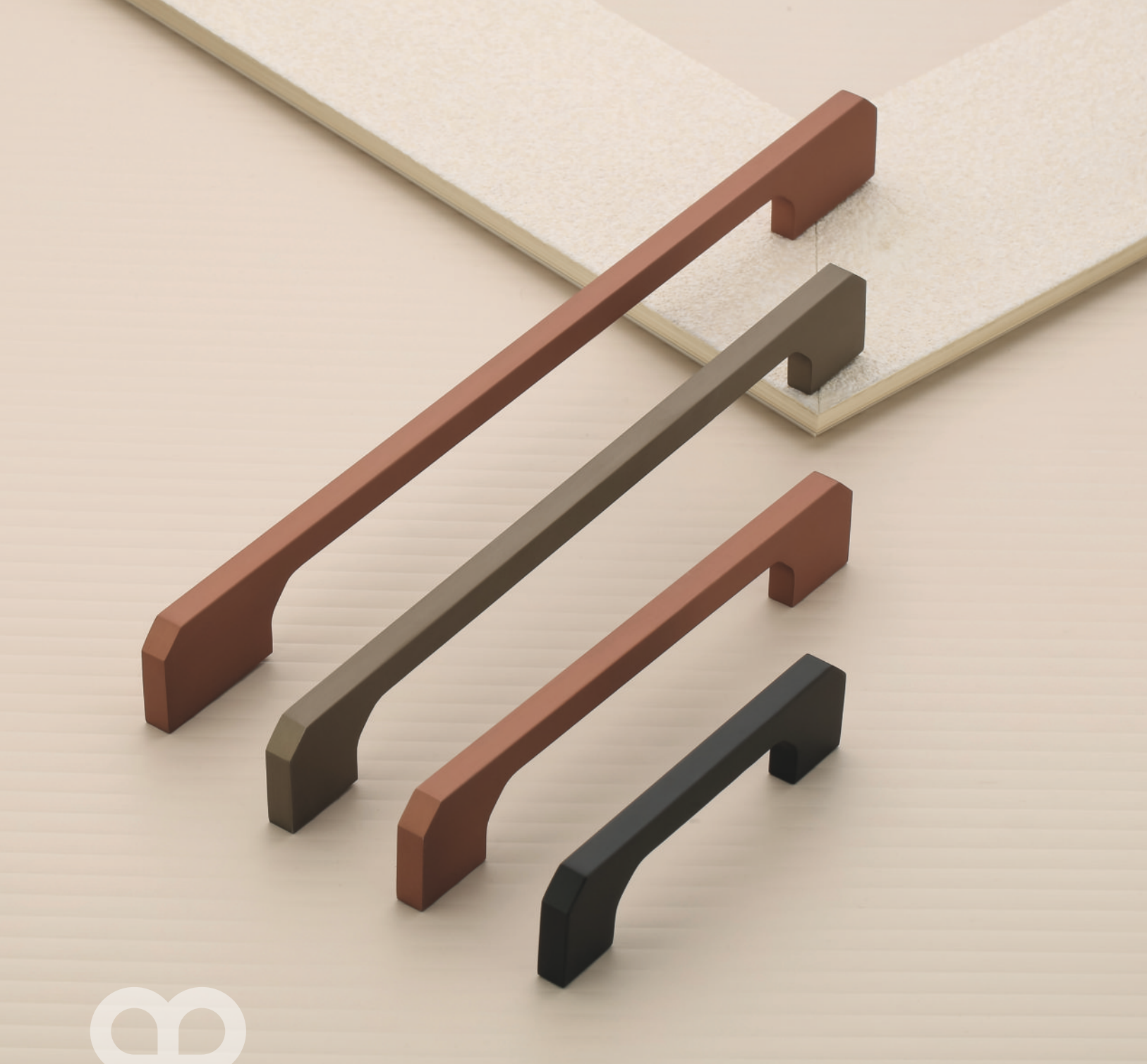
Material
Aluminium

Finish
Metallic/Gold, Rose Gold/TT
Gold/TT

Size in mm
96, 160, 320, 600

Packing
96/20, 160/15, 320/12, 600/12

910



CABINET

Handle

Material
Aluminium

Finish
Z.Black, Rose Gold/Matt
Metallic/Matt

Size in mm
96, 160, 288, 576

Packing
96/30, 160/20, 288/15, 576/15

911



CABINET

Handle



Material
Aluminium

Finish
Z-Black, Silk Rose Gold, Silk Metallic

Size in mm
96, 160, 320, 600

Packing
96/12, 160/08, 320/08, 600/06

912



CABINET

Handle

Material
Aluminium

Finish
Z.Black, Bronze, Silk Rose Gold
Silk Metallic

Size in mm
50, 96, 160, 288, 448, 576

Packing
50/40, 96/30, 160/20, 288/15
448/15, 576/15

913



CABINET

Handle



Material
Aluminium

Finish
Z.Black, Rose Gold/Matt, Bronze

Size in mm
50, 96, 160, 288, 448, 576

Packing
50/40, 96/25, 160/20, 288/15
448/15, 576/15

914

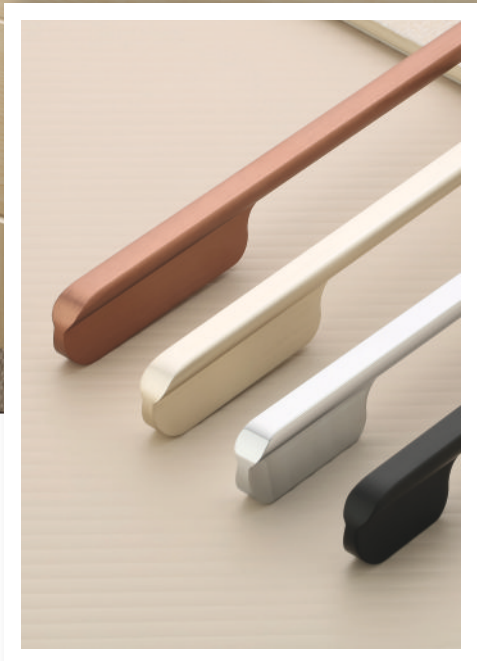
Finish
Black, Rose Gold, SS Brush
PVD Gold, PVD Rose Gold

901

Size in mm | Packing
900, 1200 | 900/10, 1200/10



WARDROBE
Handle



905 | **Finish**
Black, Rose Gold, SS Brush

Size in mm	Packing
900, 1200	900/10, 1200/10

WARDROBE
Handle



906

Finish
Black, Gold, Rose Gold, SS Brush

Size in mm | Packing
900, 1200 | 900/10, 1200/10



WARDROBE
Handle



907

Finish
Black, Copper, PVD Rose Gold, PVD Gold, SS Brush

Size in mm	Packing
900, 1200	900/10, 1200/10



Finish
Silk Gold/Black, Silk Silver/Black,
Silk R.Gold/Black, Silk Metallic/Gold

909 | **Size in mm** 900, 1200 | **Packing** 900/10, 1200/10



910

Finish
Metallic/Gold, Rose Gold/TT
Gold/TT

Size in mm | Packing
900 | 900/10



WARDROBE
Handle

911

Finish
Z.Black, Rose Gold/Matt
Metallic/Matt

Size in mm | Packing
900, 1200 | 900/10, 1200/10

WARDROBE
Handle

WARDROBE
Handle

912

Finish
Z-Black, Silk Rose Gold, Silk Metallic

Size in mm | Packing
900 | 900/06



913

Finish
Z.Black, Bronze, Silk Rose Gold
Silk Metallic

Size in mm | Packing
900, 1200 | 900/10, 1200/10



914

Finish
Z.Black, Rose Gold/Matt, Bronze

Size in mm | Packing
900, 1200 | 900/10, 1200/10





Design & Patent Registered



CABINET

Handle

Material
SS-304

Finish
AB/PVD Gold, Gray Matt/PVD R. Gold
Cola Matt/PVD Black

Size in mm
96, 160, 224, 320, 448, 600

Packing
96/15, 160/12, 224/08, 320/08
448/08, 600/08

701



Design & Patent Registered



CABINET

Handle

Material
SS-304

Finish
PVD R.Gold/Black, PVD Gold/AB
PVD R.Gold/Copper

Size in mm
96, 160, 224, 320, 448, 600

Packing
96/15, 160/12, 224/08, 320/08
448/08, 600/08

702



Design & Patent Registered



CABINET

Handle

Material
SS-304

Finish
PVD R.Gold/Black, PVD Gold/AB
PVD R.Gold/Copper

Size in mm
96, 160, 224, 320, 448, 600

Packing
96/15, 160/12, 224/08, 320/08
448/08, 600/08

703



401

Material
Zinc Alloy

Finish
CP/TT, Satin

Size in mm
96, 128, 160

Packing
96/40, 128/30, 160/20



402

Material
Zinc Alloy

Finish
Satin, AB, CP/TT

Size in mm
96, 128, 160

Packing
96/40, 128/30, 160/20

WINDOW
Handle



403

Material
Zinc Alloy

Finish
Satin Black, Satin

Size in mm
96, 128, 160

Packing
96/40, 128/30, 160/20



Design & Patent Registered



CONCEAL

Handle

Conceal-01

Material
Zinc Alloy

Finish
Cola Matt, CP, AB, SS, Black Matt

Size in mm
128, 192, 320

Packing
128/20, 192/15, 320/15



Design & Patent Registered



CONCEAL

Handle

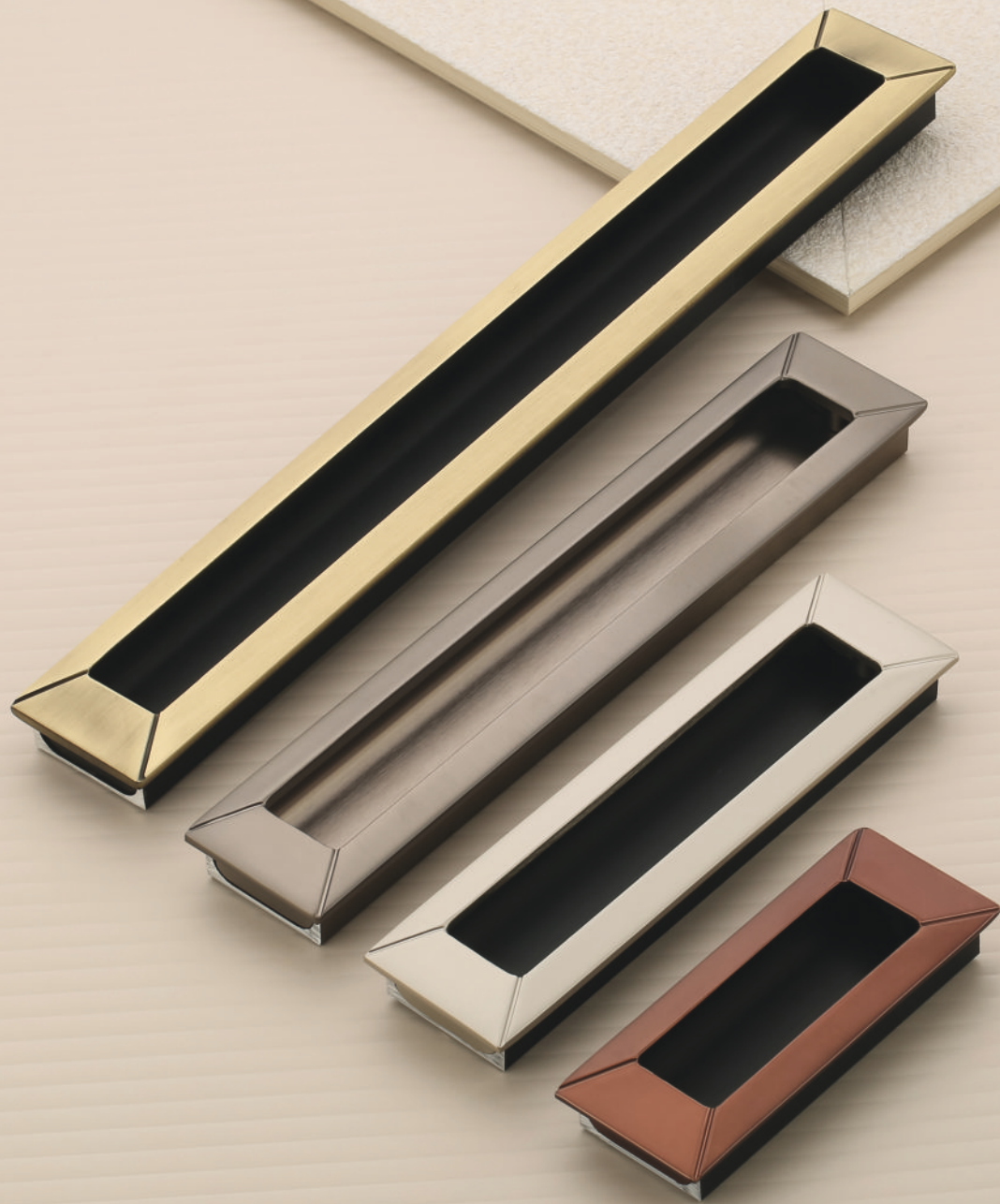
Material
Zinc Alloy

Finish
CP, SS, AB

Size in mm
96, 128, 160, 224

Packing
96/16, 128/12, 160/10, 224/10

Conceal-02



Design & Patent Registered



CONCEAL

Handle

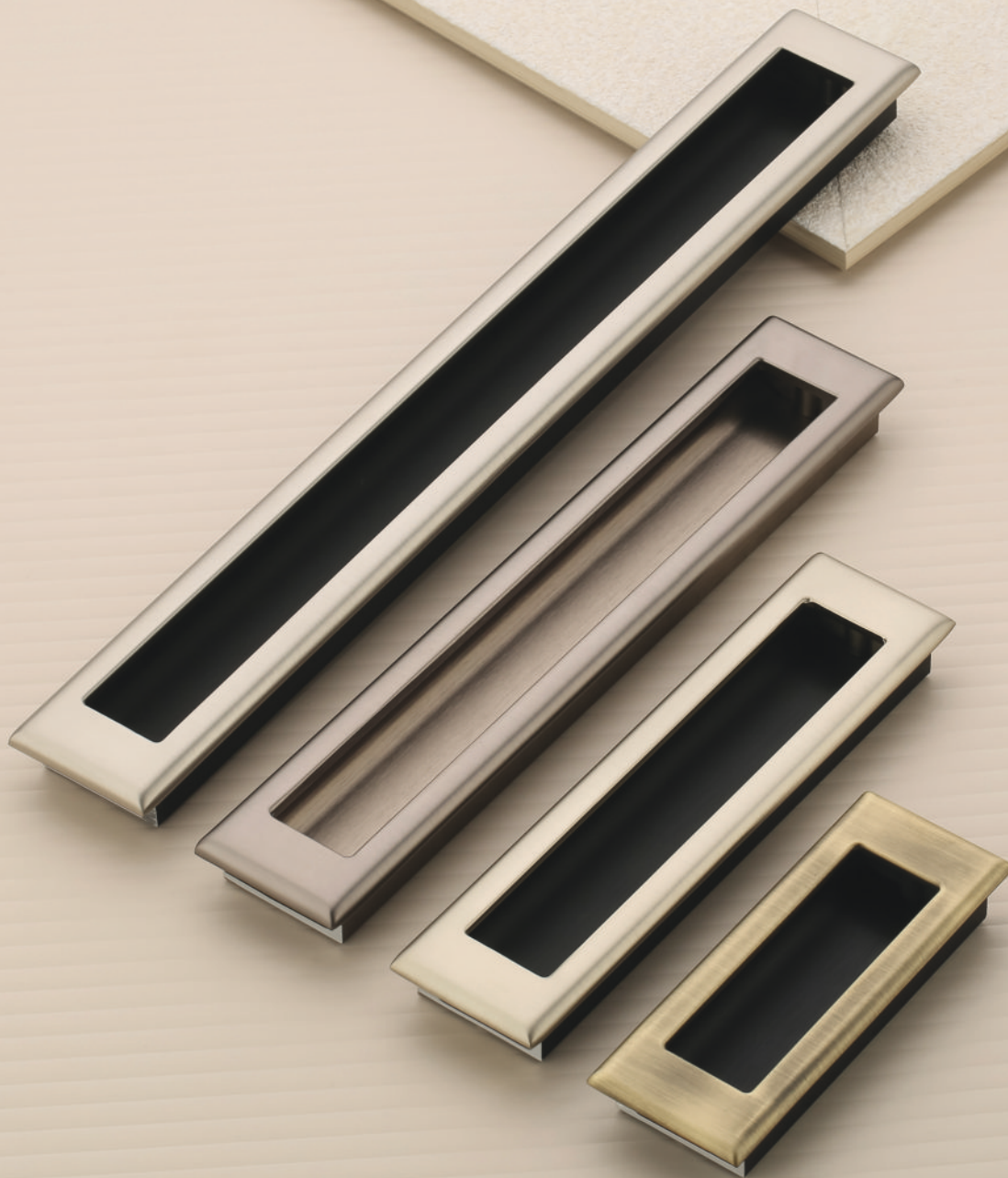
Conceal-05

Material
Zinc Alloy

Finish
Satin, AB, Black Matt, Cola Matt

Size in mm
96, 160, 224, 320

Packing
96/18, 160/12, 224/10, 320/10



Design & Patent Registered



CONCEAL

Handle

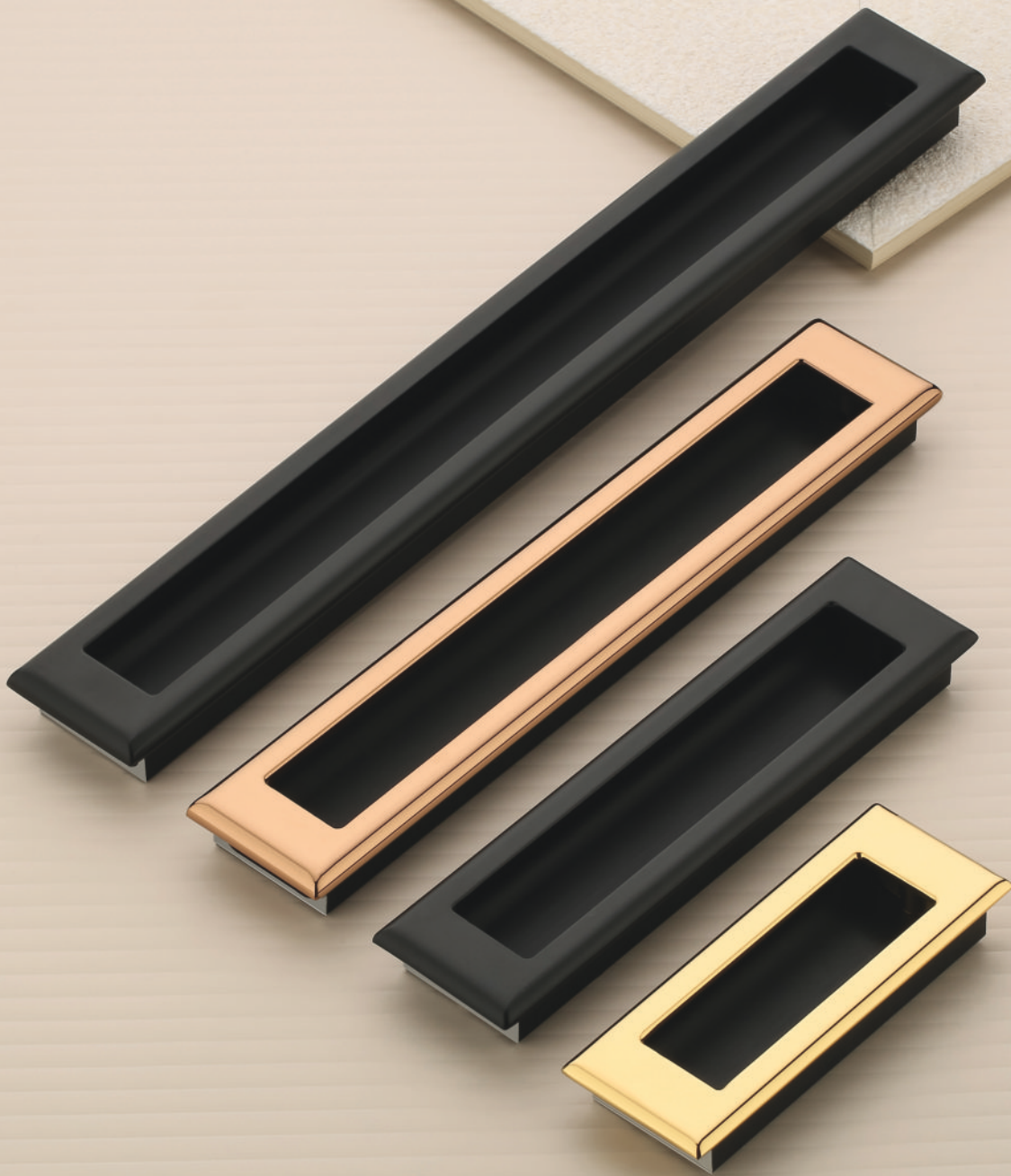
Material
Zinc Alloy

Finish
Satin, Black Matt, AB

Size in mm
96, 160, 224, 320

Packing
96/18, 160/12, 224/10, 320/10

Conceal-06



Design & Patent Registered



CONCEAL

Handle

Conceal-06 (PVD)

Material
Zinc Alloy

Finish
PVD Gold, PVD R.Gold, Z.Black

Size in mm
96, 160, 224, 320

Packing
96/18, 160/12, 224/10, 320/10



Design & Patent Registered



CONCEAL

Handle

Material
Zinc Alloy

Finish
Z.Black, Satin Matt, PVD Gold
AB, PVD R.Gold

Size in mm
96, 160, 224, 320

Packing
96/16, 160/10, 224/08, 320/08

Conceal-07



CONCEAL

Handle



Material
Aluminium

Finish
Silk SS, Silk Gold, Silk Black
Silk R.Gold

Size in mm
200, 300, 600, 900, 1200

Packing
200/12, 300/12, 600/12, 900/10
1200/10

Conceal-08



Design & Patent Registered



CONCEAL

Handle

Conceal-09

Material
Zinc Alloy

Finish
C.Black/Z.Black, PVD Gold/Z.Black
PVD Gold/AB, PVD Rose Gold/Gray

Size in mm
128, 192

Packing
128/10, 192/08



Design & Patent Registered

Knob-01

Material
Zinc Alloy

Finish
AB, Z.Black, SS, CP

Packing
50



DRAWER
Knob



Design & Patent Registered

Knob-02

Material
Zinc Alloy

Finish
Z.Black, CP, SS, AB

Packing
50



Design & Patent Registered

Knob-03

Material
Zinc Alloy

Finish
AB, Z.Black, SS, CP

Packing
50



DRAWER
Knob



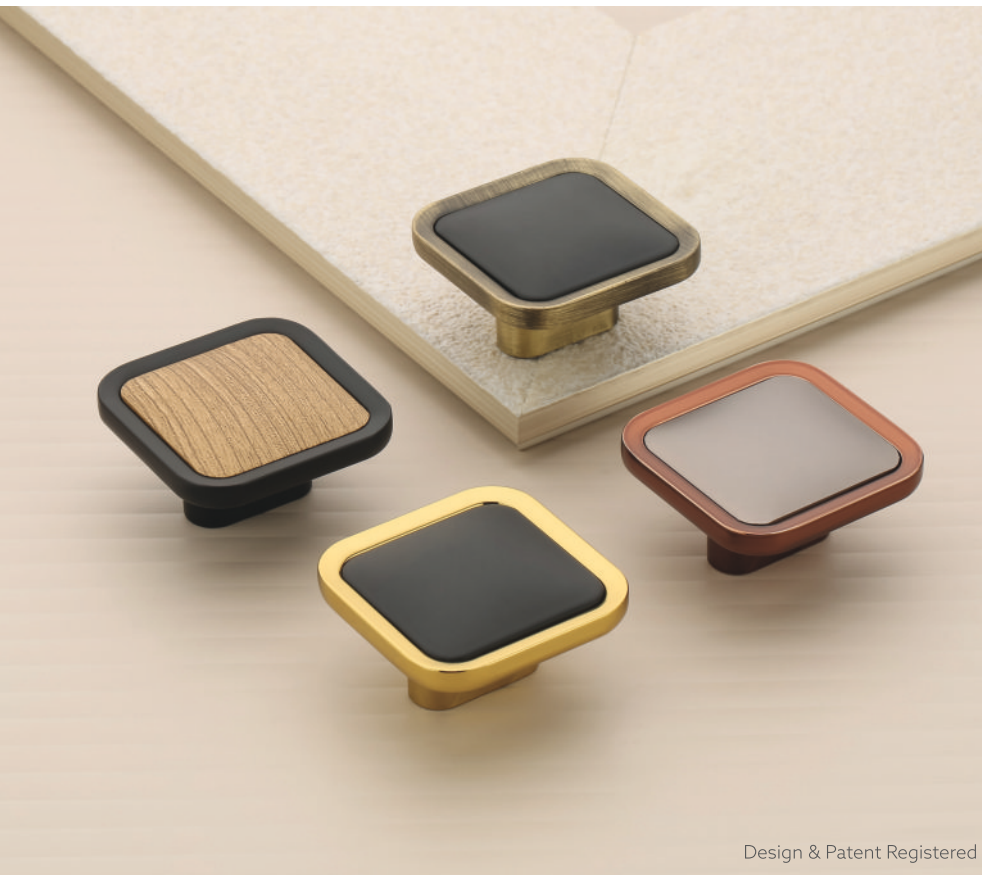
Design & Patent Registered

Knob-06

Material
Zinc Alloy

Finish
Cola Matt, CP, Satin
Black Matt

Packing
50



Design & Patent Registered

Knob-07

Material
Zinc Alloy

Finish
Gold/Black, AB/Black
Cola/Gray
Z.Black/Figure Wood

Packing
30



DRAWER
Knob



Design & Patent Registered

Knob-08

Material
Zinc Alloy

Finish
Z.Black, Gold, Satin, Cola

Packing
40



Design & Patent Registered

Knob-09

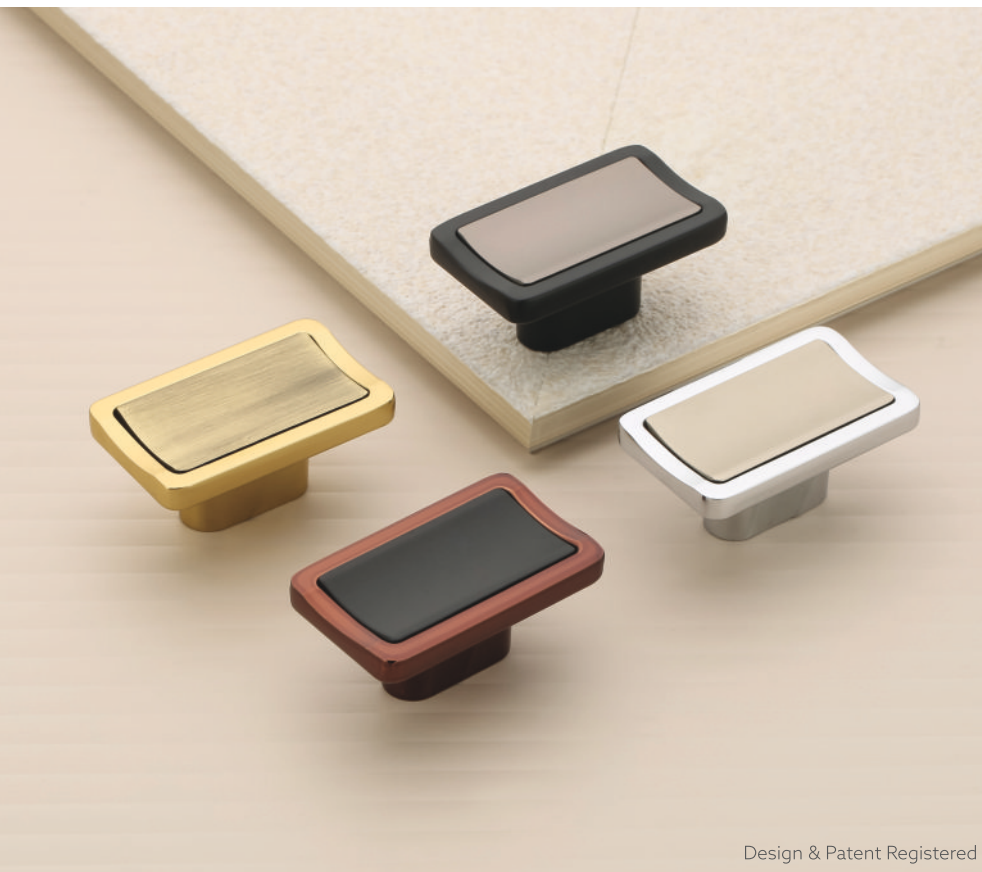
Material
Zinc Alloy

Finish
AB/Black, Gray/Z.Black
Cola/Matt Cola/CP
Satin/Wenge

Packing
40



DRAWER
Knob



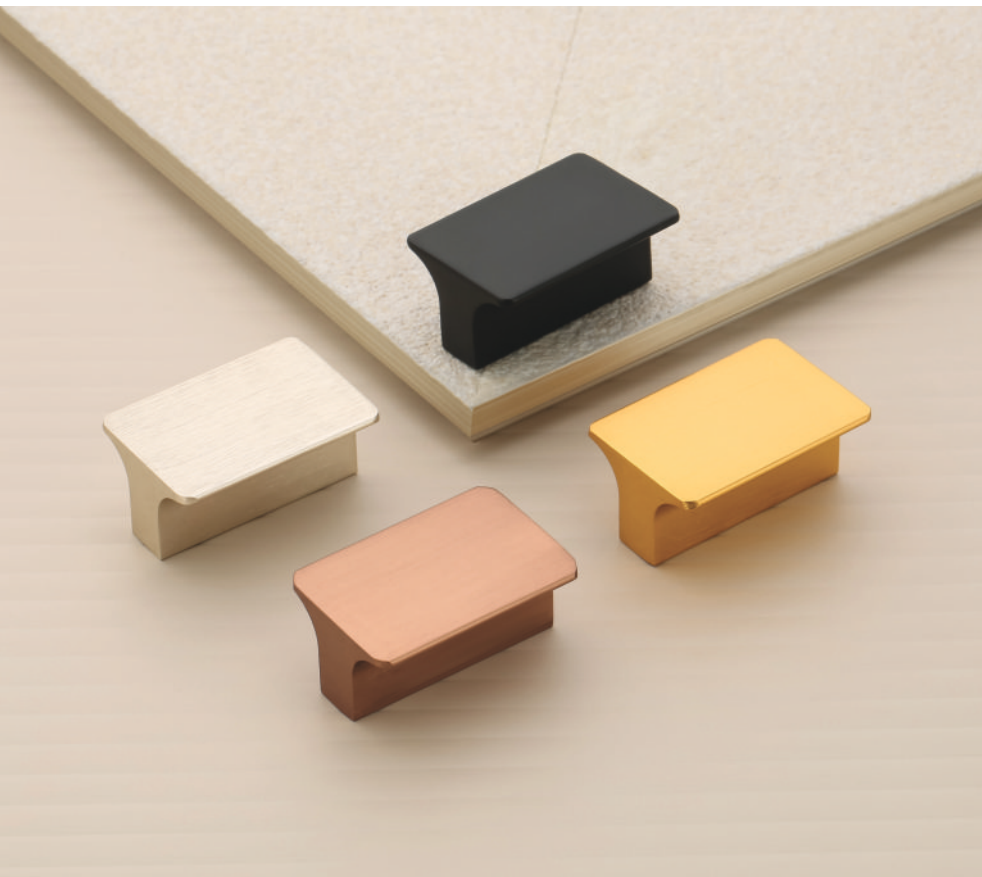
Design & Patent Registered

Knob-10

Material
Zinc Alloy

Finish
Cola/Black, Gold/AB
Z.Black/Gray, CP/Satin

Packing
40



Knob-11

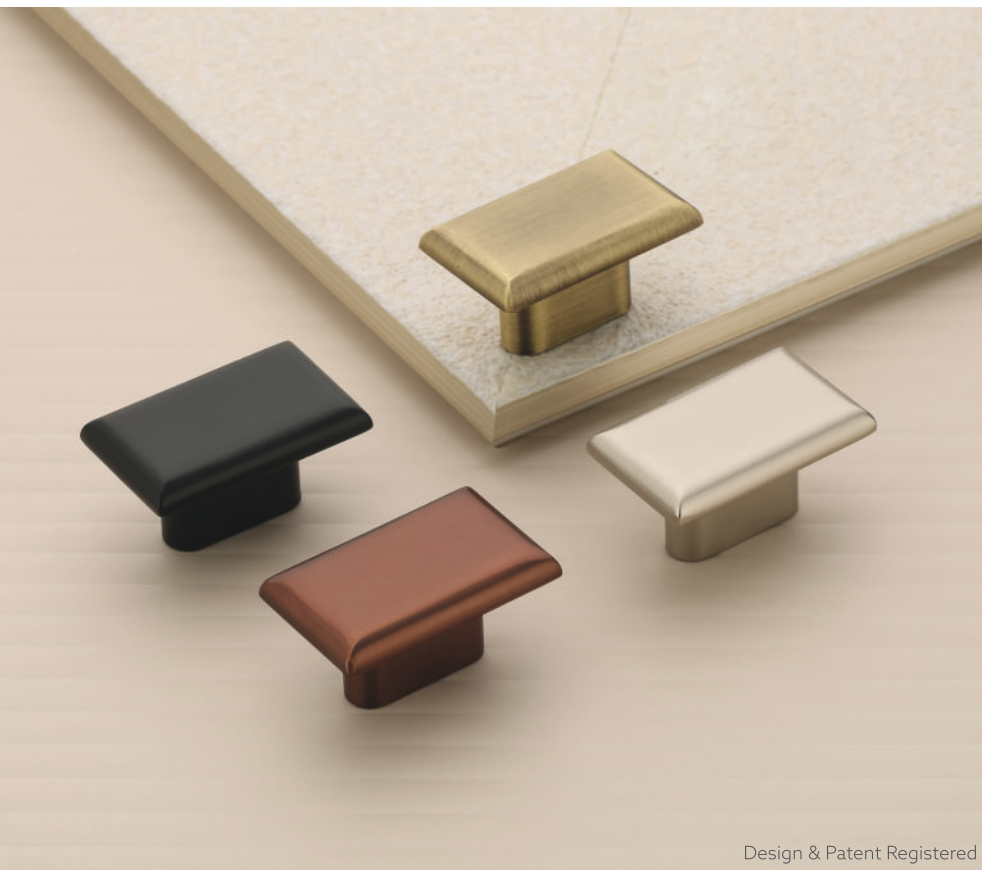
Material
Aluminium

Finish
Gold, SS Brush, Rose Gold
Z.Black

Packing
40



DRAWER
Knob



Knob-12

Material
Zinc Alloy

Finish
Cola Matt, Z.Black, AB, Satin

Packing
40

Design & Patent Registered



Design & Patent Registered

Khuti-13

Material
Zinc Alloy

Finish
PVD Rose Gold/Gray
PVD Gold/AB, Satin/CP
C.Black/Z.Black

Packing
25



DRAWER
Knob



Design & Patent Registered

Knob-14

Material
Zinc Alloy

Finish
PVD Gold/AB
Satin/B.Wood
PVD RG/Gray
Z.Black/PVD RG
C.Black/Z.Black

Packing
40



Design & Patent Registered

Knob-15

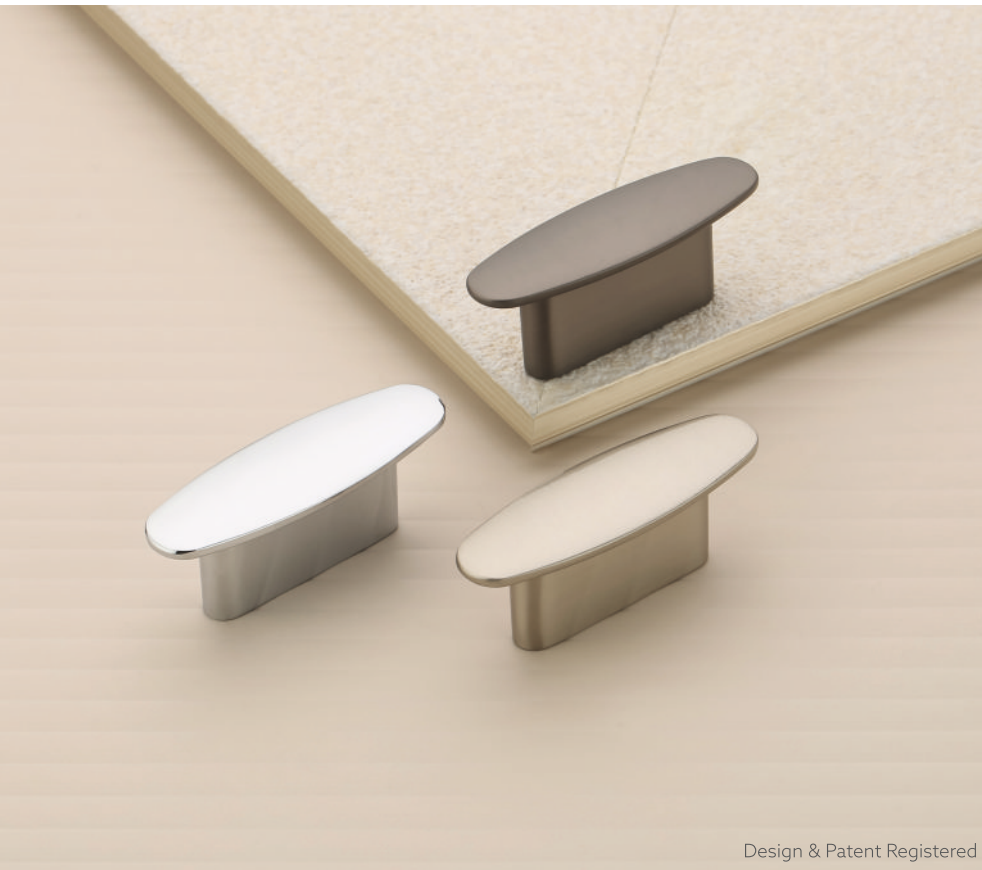
Material
Zinc Alloy

Finish
PVD Gold/AB
PVD Rose Gold/Gray
Satin/B.Wood
C.Black/Z.Black

Packing
20



DRAWER
Knob



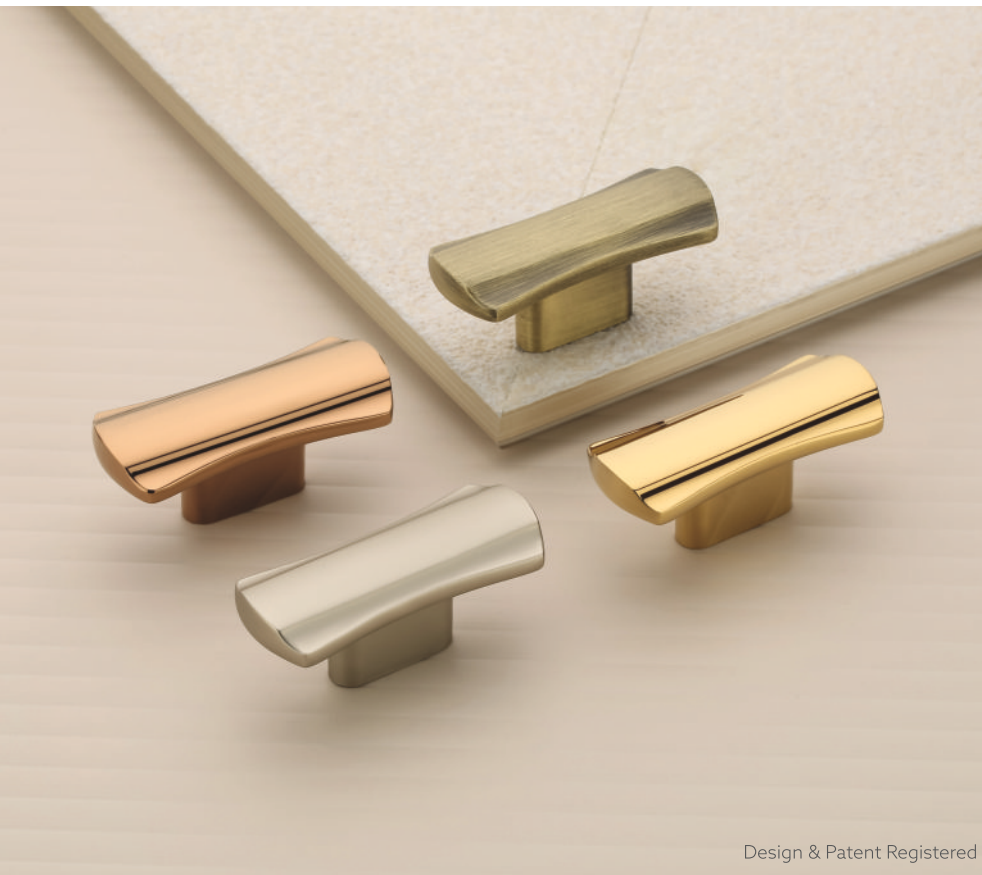
Design & Patent Registered

Knob-823

Material
Zinc Alloy

Finish
SS, Black Matt, CP

Packing
50



Design & Patent Registered

Knob-858

Material
Zinc Alloy

Finish
PVD R. Gold, Satin Matt
PVD Gold, AB

Packing
40



DRAWER
Knob



Design & Patent Registered

Knob-860

Material
Zinc Alloy

Finish
CP/Satin, AB/Black
Cola/Gray, Gold/B. Wood

Packing
40



Design & Patent Registered

Knob-862

Material
Zinc Alloy

Finish
PVD RG/Gray
PVD Gold/Z.Black
C.Black/Z.Black
PVD Gold/AB

Packing
30



DRAWER
Knob

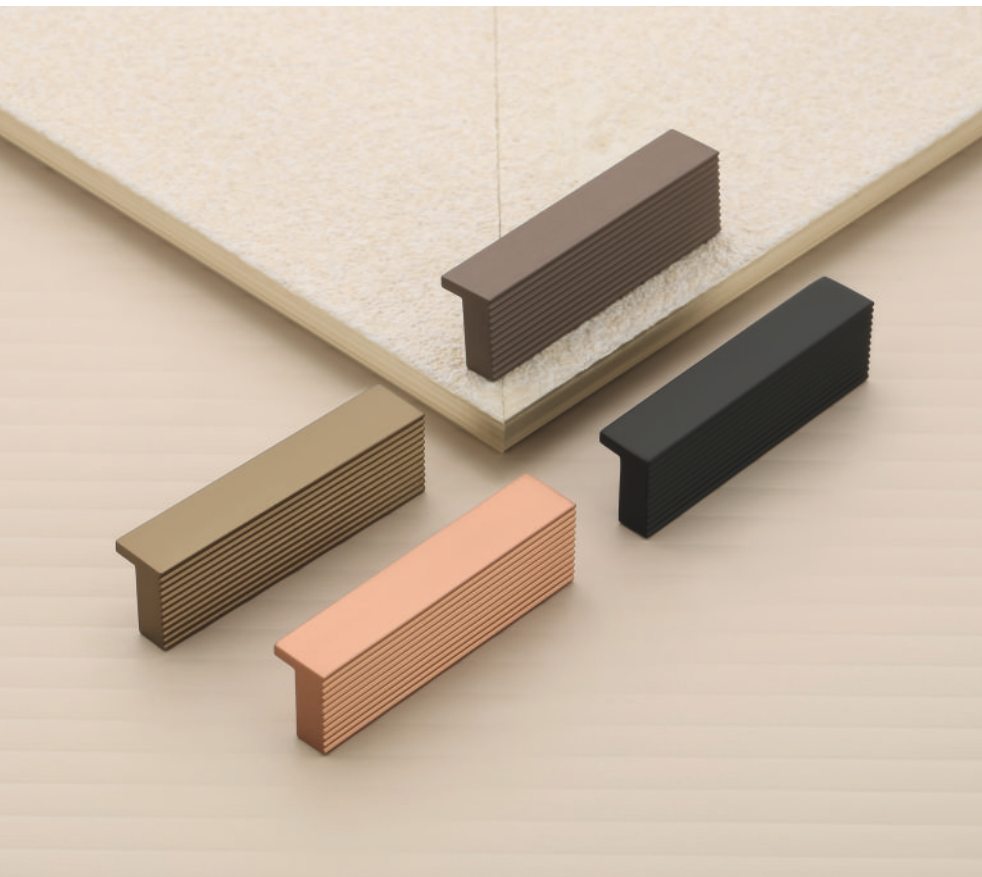


Knob-906

Material
Aluminium

Finish
SS Brush, Black
Gold, Rose Gold

Packing
40



Knob-913

Material
Aluminium

Finish
Z.Black, Bronze
Silk Rose Gold
Silk Metallic

Packing
40



DRAWER

Knob



Knob-914

Material
Aluminium

Finish
Z.Black, Bronze
Rose Gold/Matt

Packing
40



Design & Patent Registered

Kadi-01

Material
Zinc Alloy

Finish
Satin/Black, AB/Black

Packing
40



DRAWER
Kadi



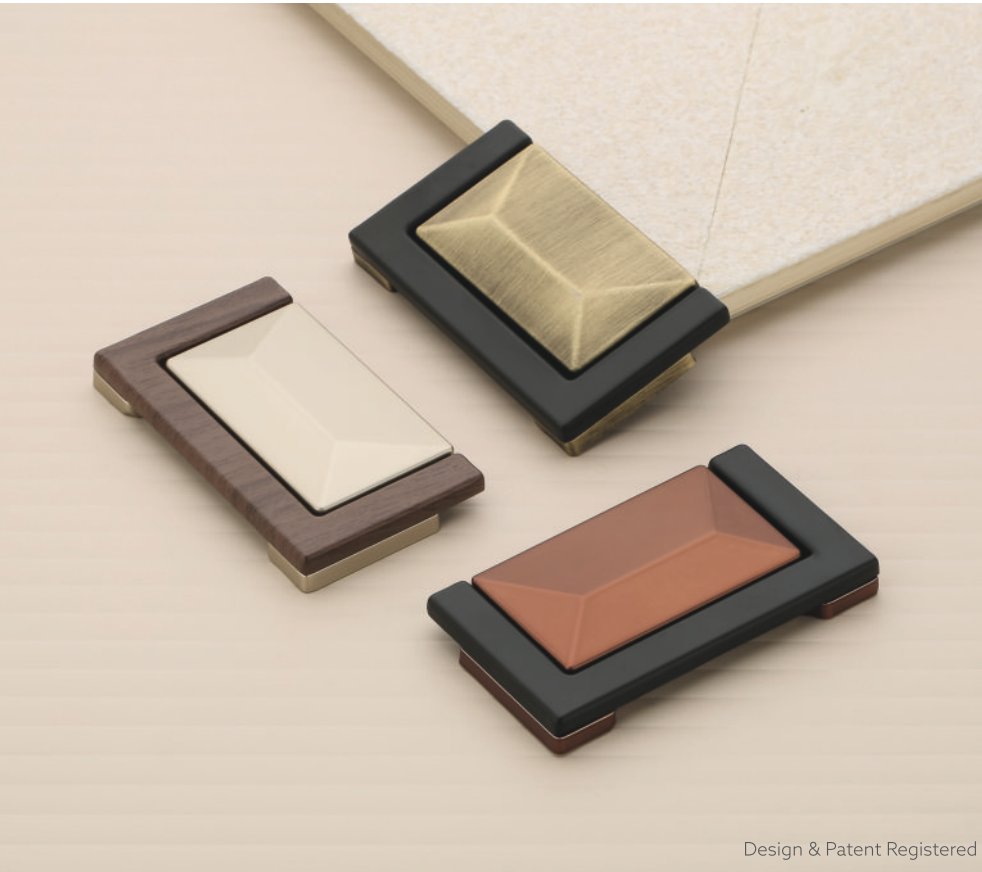
Design & Patent Registered

Kadi-02

Material
Zinc Alloy

Finish
Satin/CP, CP/Wenge

Packing
40



Design & Patent Registered

Kadi-03

Material
Zinc Alloy

Finish
Satin/Wenge
Cola/Black
AB/Black

Packing
40



DRAWER

Kadi



Design & Patent Registered

Kadi-04

Material
Zinc Alloy

Finish
Black/Gold, Satin/CP
Cola Matt/Cola CP
Gray/Z.Black

Packing
40



Design & Patent Registered



RAWER
Kadi

Kadi-05

Material
Zinc Alloy

Finish
AB/Gold, Black/Cola
Satin/Wenge, Gray/Z.Black

Packing
40



Design & Patent Registered



RAWER
Kadi

Kadi-06

Material
Zinc Alloy

Finish
PVD Rose Gold/Satin
PVD Gold/AB
PVD Rose Gold/Gray
C.Black/Z.Black

Packing
40



Design & Patent Registered



GLASS DOOR

Handle

Material
SS-304

Finish
CP/SS, SS/Wenge

Size in mm
300, 450, 600

Packing
1-Set

1003



Design & Patent Registered



GLASS DOOR

Handle



Material
SS-304

Finish
PVD Rose Gold/Black
PVD Gold/AB, PVD Gold/Black
SS/Black

Size in mm
300, 450, 600, 900

Packing
1-Set

1006



Design & Patent Registered



GLASS DOOR

Handle

Material
SS-304 & Wooden

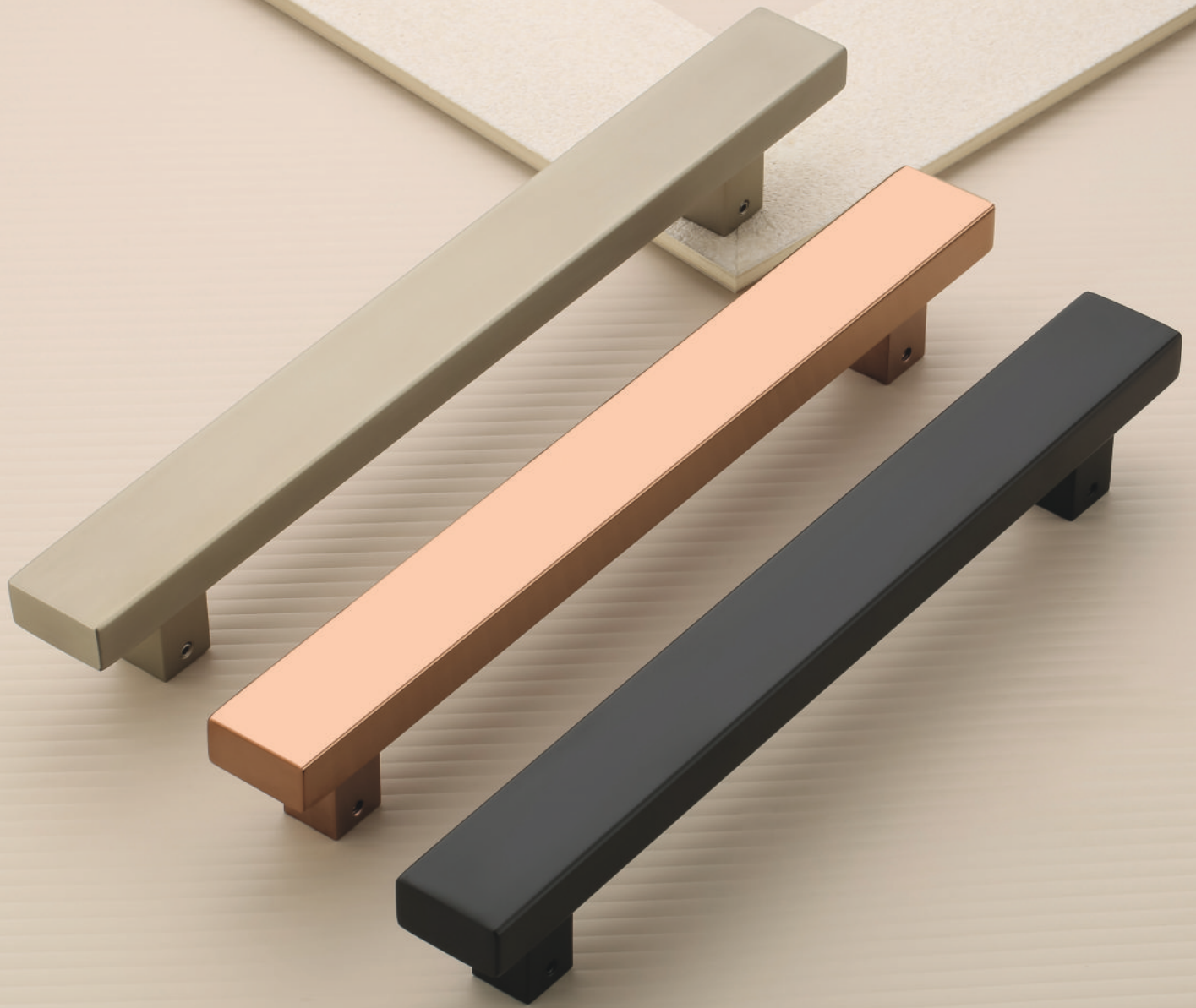
Finish
Copper/Wood, Black/Wood

Size in mm
300, 450, 600, 900

Packing
1-Set

1007





Design & Patent Registered



GLASS DOOR

Handle

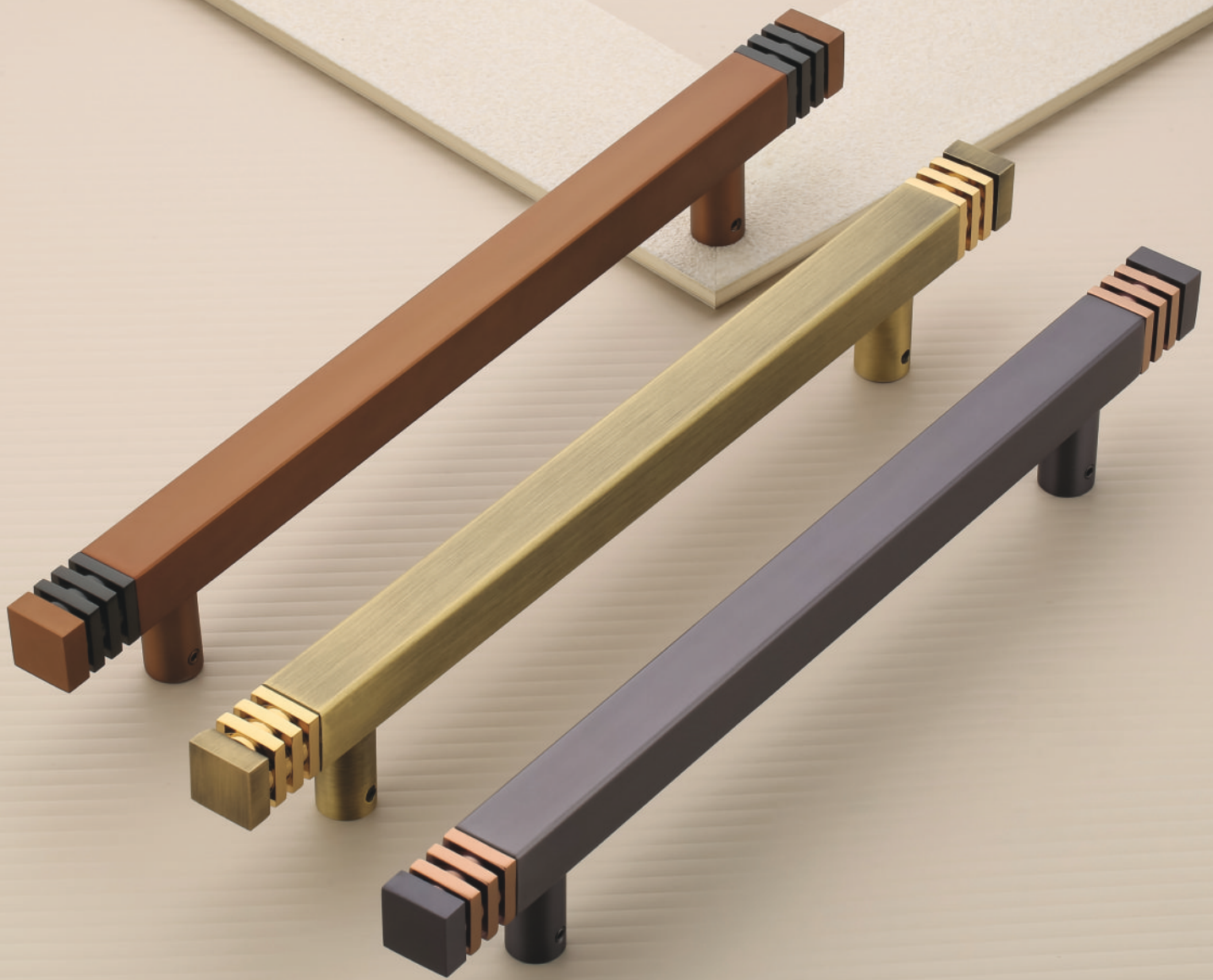
Material
SS-304

Finish
SS/Matt, PVD Rose Gold
Z.Black

Size in mm
300, 450, 600, 900

1008

Packing
1-Set



Design & Patent Registered



GLASS DOOR

Handle



Material
SS-304

Finish
Cola Matt/PVD Black,
Gray Matt/PVD R.Gold
AB/PVD Gold

Size in mm
300, 450, 600

Packing
1-Set

1009



Design & Patent Registered



GLASS DOOR

Handle



Material
SS-304

Finish
PVD Gold/AB
PVD Rose Gold/Copper
PVD Rose Gold/Black

Size in mm
300, 450, 600

Packing
1-Set

1010



GLASS DOOR

Handle



Design & Patent Registered



Material
SS-304

Finish
PVD Gold, PVD Rose Gold
SS/Matt, Z.Black

Size in mm
300, 450, 600, 900

Packing
1-Set

1011



Design & Patent Registered



GLASS DOOR

Handle

Material
SS-304 & Wood

Finish
PVD Rose Gold/Wood
PVD Gold/Wood, Z.Black/Wood

Size in mm
300, 450, 600, 900, 1200

Packing
1-Set

1012





Design & Patent Registered



CLOTH
Hook

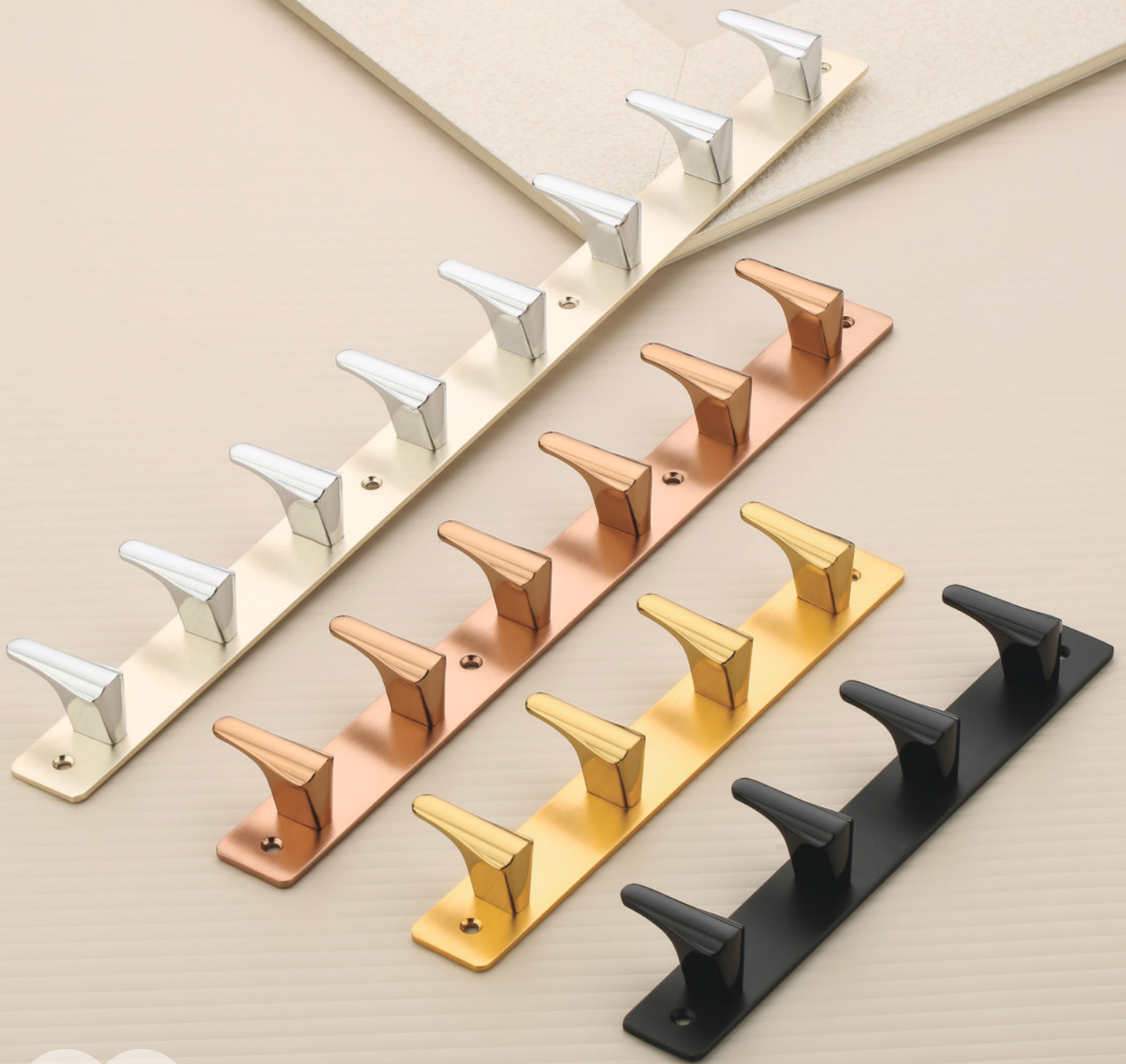
Khuti-01

Material
Zinc Alloy

Finish
Black/TT, SS/B.Wood
Cola/TT, Gold/TT

Hook
04, 06, 08

Packing
04/10, 06/08, 08/06



Design & Patent Registered



Material
Zinc Alloy

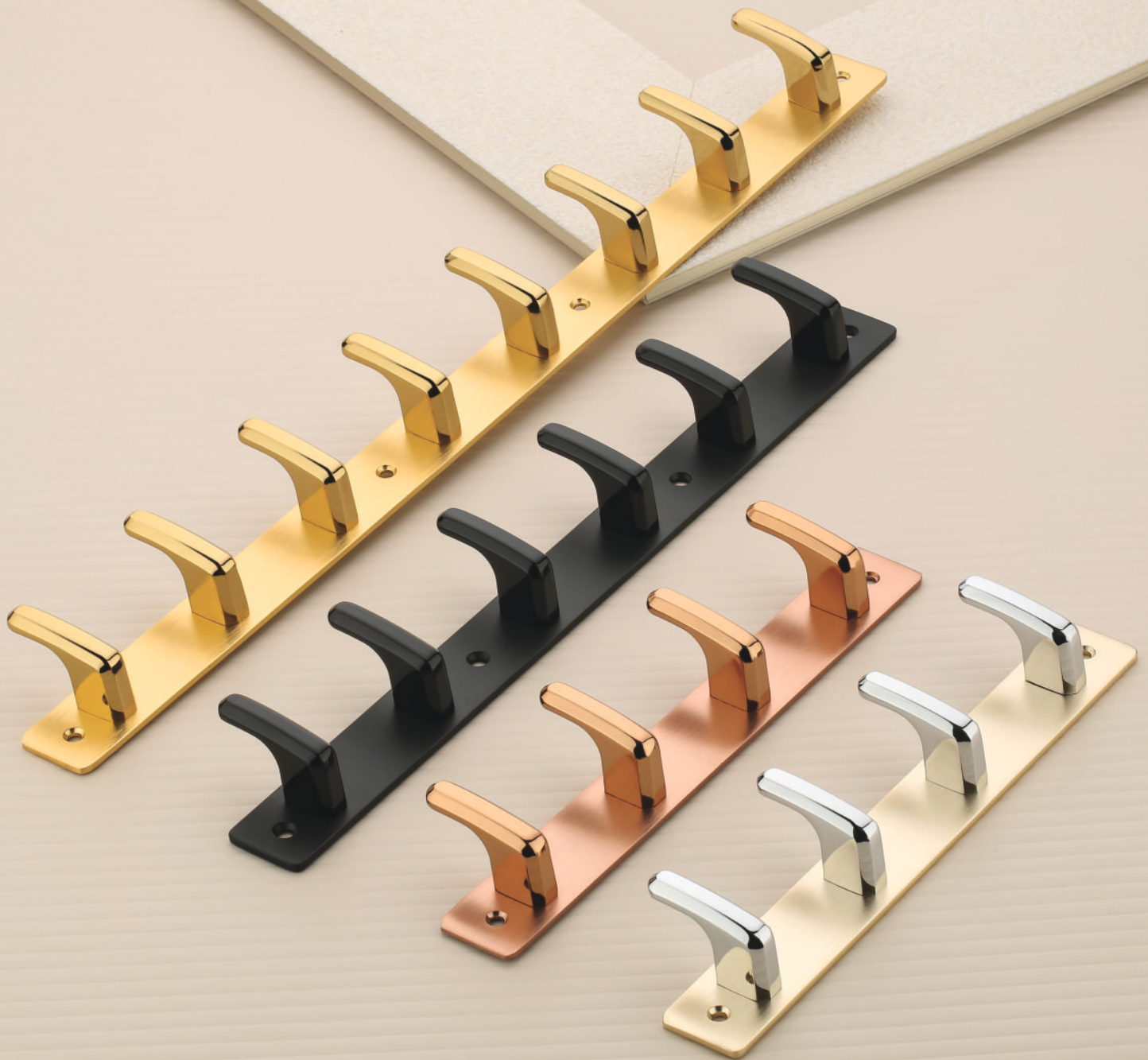
Finish
Black/TT, SS/CP
Cola/TT, Gold/TT

Hook
04, 06, 08

Packing
04/10, 06/08, 08/06

CLOTH
Hook

Khuti-02



Design & Patent Registered



CLOTH
Hook

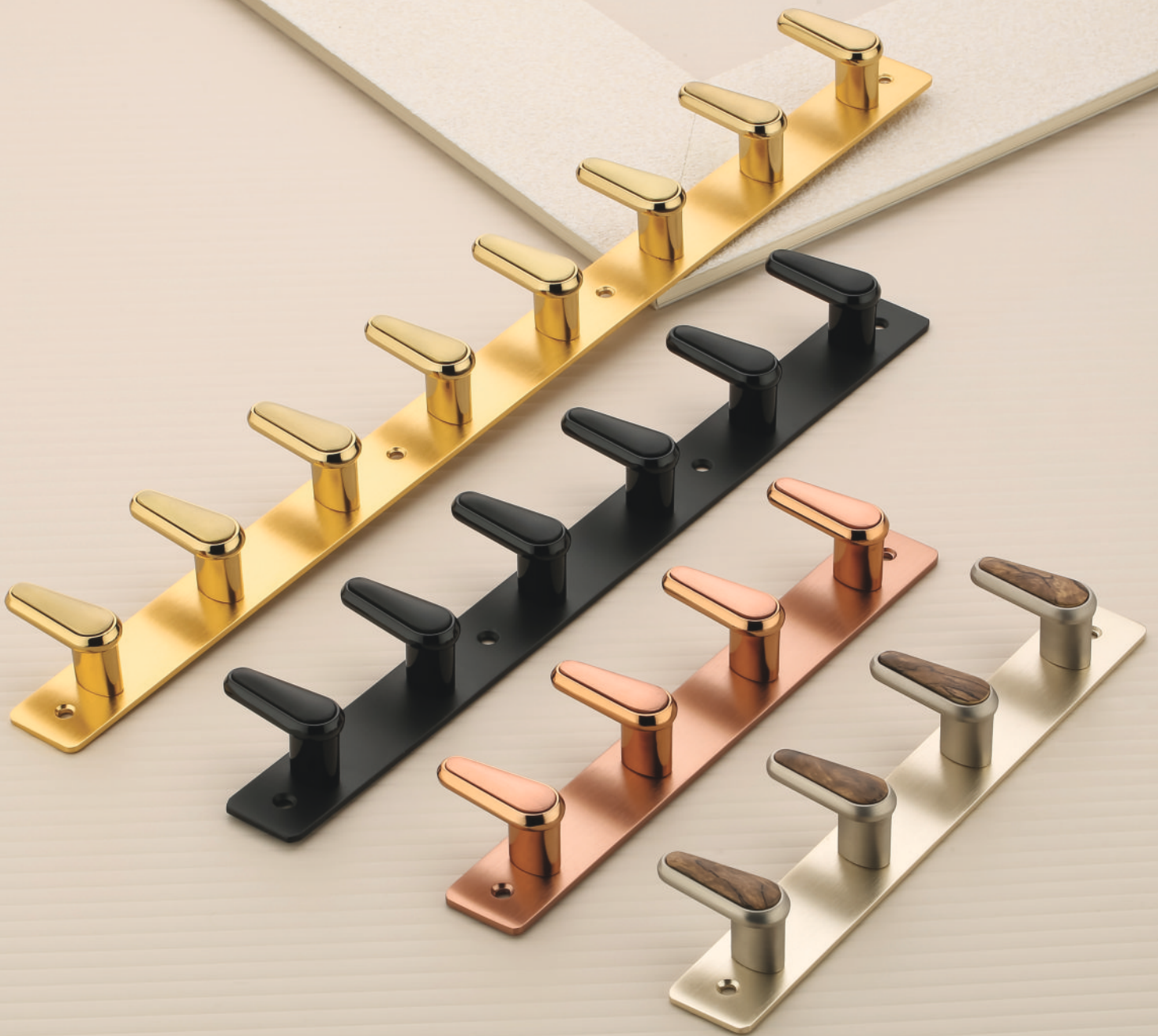
Khuti-03

Material
Zinc Alloy

Finish
Black/TT, SS/CP
Cola/TT, Gold/TT

Hook
04, 06, 08

Packing
04/10, 06/08, 08/06



Design & Patent Registered



CLOTH
Hook

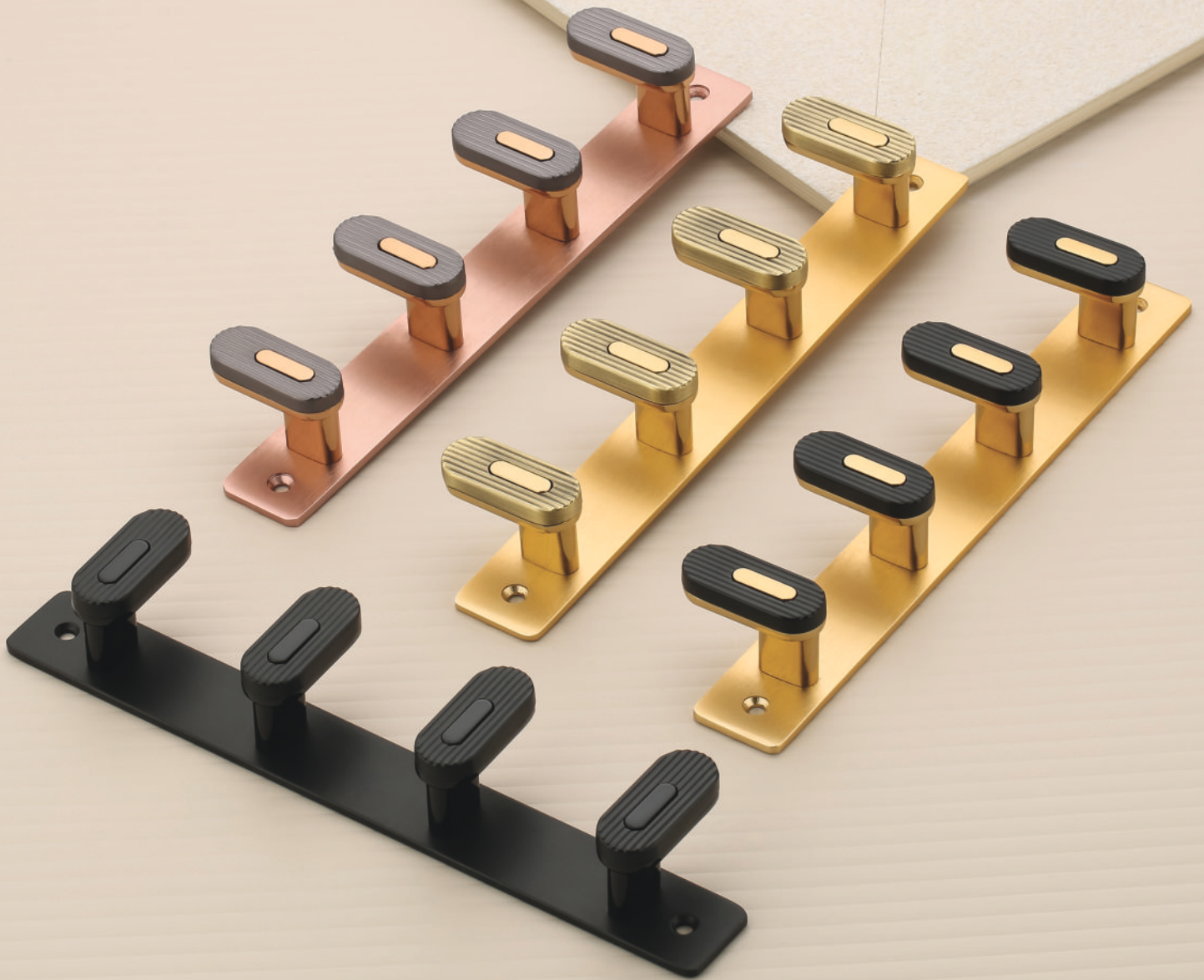
Khuti-04

Material
Zinc Alloy

Finish
Black/TT, SS/B.Wood
Cola/TT, Gold/TT

Hook
04, 06, 08

Packing
04/10, 06/08, 08/06



Design & Patent Registered



Material
Zinc Alloy

Finish
RG/Gray, Gold/Z.Black
C.Black/Z.Black, Gold/AB

Hook
04, 06

Packing
04/10, 06/08

CLOTH
Hook

Khuti-05





Strong **Links** of
Strong Distribution
Chain.

INSTRUCTIONS



USE COTTON CLOTH TO CLEAN

DO NOT USE



MASKING TAPE



THINNER



DETERGENT POWDER



TOILET CLEANER



ACID

NOTE :

If you do not follow above instructions Company will not be Responsible for the Product Damage.



AN ISO 9001:2008 CERTIFIED COMPANY[®]
POINS[®]
An Exclusive Furniture Fittings

Mfg. By.
OM SAI MANUFACTURE
Rajkot (Guj.-INDIA)